

# Using ESDS Government Resources for Opinions and Lifestyle Surveys

Sarah King-Hele  
ESDS Government  
Centre for Census and Survey Research  
University of Manchester



# ESDS Government

- Supports major UK data series
  - Large surveys conducted, usually by government e.g. GLF, Opinions, Labour Force Survey, Health Survey for England
  - Repeated cross-sections, often continuous
  - Important, widely used micro-data
- Joint service
  - Team at UK Data Archive receive and archive data
  - Team at Manchester deal with users
  - Registration for the data managed by ESDS centrally



# Role

- Promoting the use of the data
- Navigating users through the *right* materials
- Creating additional materials to help users discover datasets and supporting materials
- Encouraging good practice
- Bridging the gap between data collector and users



# ONS Opinions webpage

- OMNIBUS home
- Datasets
- Resources
- Questionnaires
- Starting Analysis
- Citing this data
- Modules
- Variables Search
- Links
- Registered Uses
- FAQ
- Other surveys

## ONS Opinions Survey (formerly the ONS Omnibus Survey)

The ONS Opinions Survey, previously known as ONS Omnibus Survey or Omnibus, is a regular, multi-purpose survey which was carried out in eight months of the year until April 2005. From this point it has run monthly. It started operating commercially in 1990 and was set up originally to meet the needs of government departments for a survey that used short and simple sets of questions, had greater statistical reliability than private sector omnibus surveys and a properly designed random sample. Now, however, an increasing number of academics are finding it a valuable research tool.

The Opinions Survey is used for a number of purposes, for example:

- to provide quick answers to questions of immediate interest
- to provide information on topics that do not require a full survey
- to develop and pilot questions for other surveys
- to sift for subgroups that can be followed up in another survey

Each month's questionnaire consists of two elements: core questions, covering demographic information, are asked each month together with non-core questions that vary from month to month. A list of modules is available from our [Omnibus Modules page](#).

The National Statistics web site contains some [detailed information](#) about the survey.

[Services at risk and unavailable 23 to 26 March 2012](#)

**Latest News**

- [New EHS teaching dataset](#)
- [Ethnicity guide updated](#)
- [Lifestyles Surveys: Consultation Review](#)

[More news](#)

[Upcoming Events](#)

[Recent Data Releases](#)

[Recent Publications](#)

**Survey description, modules and news**



Economic and Social Data Service

<http://www.esds.ac.uk/government/omnibus/>

[OMNIBUS home](#)[Datasets](#)[Resources](#)[Questionnaires](#)[Starting Analysis](#)[Citing this data](#)[Modules](#)[Variables Search](#)[Links](#)[Registered Uses](#)[FAQ](#)[Other surveys](#)

## ONS Opinions Survey (formerly the ONS Omnibus Survey)

The ONS Opinions Survey, previously known as ONS Omnibus Survey or Omnibus, is a regular, multi-purpose survey which was carried out in eight months of the year until April 2005. From this point it has run monthly. It started operating commercially in 1990 and was set up originally to meet the needs of government departments for a survey that used short and simple sets of questions, had greater statistical reliability than private sector omnibus surveys and a properly designed random sample. Now, however, an increasing number of academics are finding it a valuable research tool.

[Download data via UKDA](#)

The Opinions Survey is used for a number of purposes, for example:

- to provide quick answers to questions of immediate interest
- to provide information on topics that do not require a full survey
- to develop and pilot questions for other surveys
- to sift for subgroups that can be followed up in another survey

Each month's questionnaire consists of two elements: core questions, covering demographic information, are asked each month together with non-core questions that vary from month to

[Variables search](#)

[Help to get started: FAQs and Starting analysis](#)



# Variable search

## Datasets for ONS Omnibus Survey

For each survey entry all variables are listed with further information giving the distribution of each variable and any additional information available. The Information and Download link takes you to the ESDS Access pages for that survey.

### Search variables

**omnibus**

When searching you may wish to use common abbreviations for words (govt for government) if you don't get results you're expecting. This is because the survey documentation searched has used these abbreviations.

ONS Opinions Survey, December 2008

ONS Opinions Survey, October 2009

ONS Opinions Survey, September 2009

ONS Opinions Survey, August 2009

[Variables Information and Download](#)

[Variables Information and Download](#)

[Variables Information and Download](#)

[Variables Information and Download](#)

## ESDS Government Variable Database: Search Results

You searched for **internet** in the ESDS Government variables database for the , no the [catalogue](#). There are 9976 results:

- [OMNIBUS aprim29](#) (Primary actvty - total time (mins per day): use a computer (or accessing the internet)):  
[ONS Omnibus Survey, Time Use Module, February, June, September and November 2005.](#)
- [OMNIBUS asec29](#) (Scndry actvty - total time (mins per day): use a computer (accessing the internet)):  
[ONS Omnibus Survey, Time Use Module, February, June, September and November 2005.](#)
- [OMNIBUS dvact1](#) (DV for all Internet activities in last 3 months):  
[ONS Omnibus Survey, Internet Access Module, May, July and October 2005, E-Government Module, October 2004 and February, May and July 2004, Survey, Internet Access Module, April, July and October, 2003 and February 2004.](#)

### ONS Omnibus Survey Variable: DV for all Internet activities in last 3 months (dvact1)

Value	Label	Count Percentage	Dataset: <a href="#">ONS Omnibus Survey, Internet Access Module, May, July and October, 2005, Filename: 0510330</a>
1.00	Using e-mail	627 87%	
2.00	Telephoning over the Internet / Video conferencing	1 0%	
3.00	Other communication (eg chat rooms)	5 0%	
4.00	Searching for information about goods or services	0 0%	
5.00	Searching for information about travel and accommodation	0 0%	
6.00	Listening to web radios	0 0%	

# Publications Database

## Publications citing ESDS Government Surveys

### Survey:

ONS Omnibus Survey

### Keyword Search:

Insert a phrase to search for in the title, abstract and keywords of a paper. Leave blank to show all matching papers.

### Author Search:

Insert a surname to search for that author. Leave blank to show all matching papers.

### Year Search:

From  to

### Sort:

- by author (alphabetical)  
 by year (recent first)

Submit Query

## Search Results

[New Search](#) [Select all records](#)

Download selected records into:

Jarvis, MJ

[Monitoring cigarette smoking prevalence in Britain in a timely fashion](#)

*ADDICTION*. 98 1569 - 1574 NOV 2003

Wardle, J Steptoe, A

[Socioeconomic differences in attitudes and beliefs about healthy lifestyles](#)

*JOURNAL OF EPIDEMIOLOGY AND COMMUNITY HEALTH*. 57 440 - 443 JUN 2003

Wardle, J Johnson, F

[Weight and dieting: examining levels of weight concern in British adults](#)

*INTERNATIONAL JOURNAL OF OBESITY*. 26 1144 - 1149 AUG 2002

Newton, JT Gibbons, DE

[Vacant posts reported in dental practice: implications for human resource planning](#)

*BRITISH DENTAL JOURNAL*. 192 37 - 39 JAN 12 2002

esds

Economic and Social Data Service

# The General Lifestyle Survey web-pages have all the same features...

About	Data	Themes	Resources	News	Events	Which servi
<a href="#">GHS home</a>	<h2>General Lifestyle Survey (formerly the General Household Survey)</h2>					
<a href="#">Datasets</a>	<p>The General Lifestyle Survey (GLF or GLS - the survey is sometimes referred to as the GLS), formerly known as the General Household Survey (GHS), is a multi-purpose continuous survey carried out by the ONS collecting information on a range of topics from people living in private households in Great Britain. This information is used by government departments and other organisations for planning, policy and monitoring purposes and to present a picture of households, family and people in Great Britain.</p>					
<a href="#">Resources</a>	<p>The survey has run continuously since 1971, except for breaks in 1997/8 (when the survey was reviewed) and 1999/2000 when the survey was re-developed. Following the 1997 review, the survey was relaunched from April 2000 with a different design. The relevant development work and the changes made are fully described in the <a href="#">Living in Britain report</a> for the 2000-2001 survey. Following its review, the GLF/GLS was changed to comprise two elements: the continuous survey and extra modules, or 'trailers'. The continuous survey remained unchanged from 2000 to 2004, apart from essential adjustments to take account of, for example, changes in benefits and pensions. The GLF/GLS retained its modular structure and this allowed a number of different trailers to be included for each of those years, to a plan agreed by sponsoring government departments.</p>					
<a href="#">Questionnaires</a>						
<a href="#">Starting Analysis</a>						
<a href="#">Citing this data</a>						
<a href="#">Useful Notes</a>						
<a href="#">Variables Search</a>						
<a href="#">Links</a>						
<a href="#">Registered Uses</a>						
<a href="#">FAQ</a>						
<a href="#">Other surveys</a>						

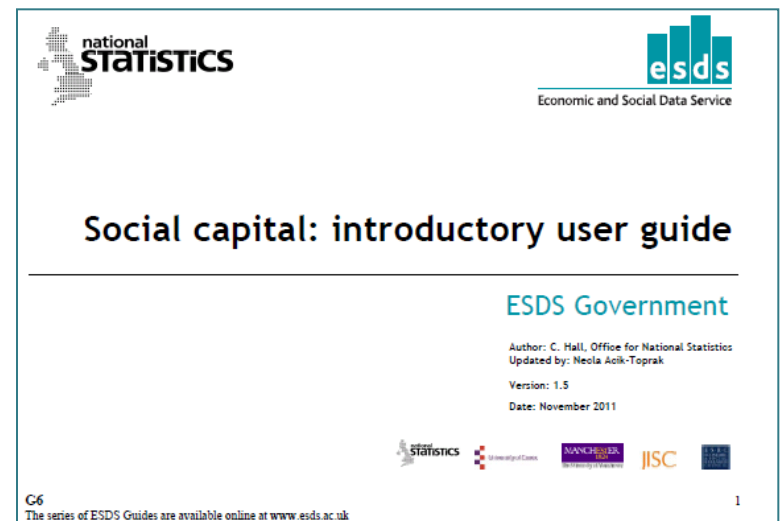
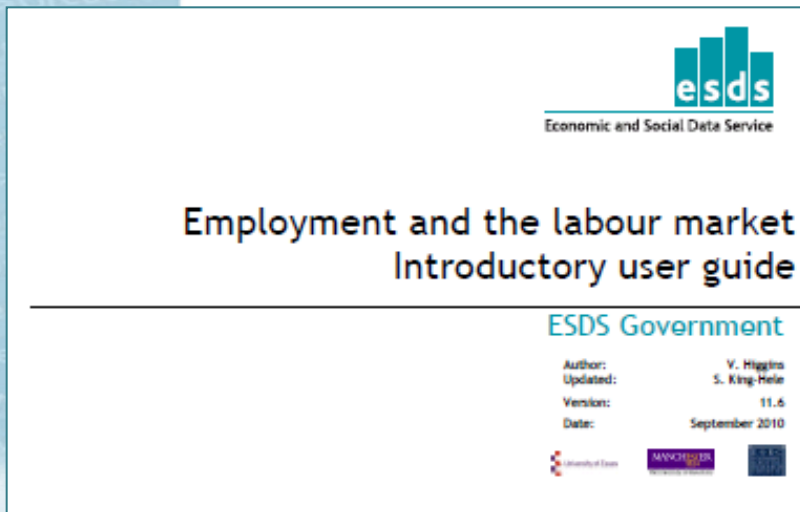


Economic and Social Data Service

<http://www.esds.ac.uk/government/ghs/>

# Introductory Guides

- General introduction to what's available, particularly among Government datasets, for researchers in specific areas of research
  - Strengths of different sources
  - Links to other appropriate sources
  - Updated annually



# ESDS Government - general resources

- Introductory user guides (SPSS, Stata)
- Analysis guides (e.g. weighting, complex surveys, change over time)
- Teaching datasets: cut down versions of datasets, user guide



# Keeping in touch

ESDS Government

Newsletter Issue 17  
June 2011

Editor: Vanessa Higgins and Veronice Smith



## ESDS Government Newsletter

### Review of the General Lifestyle Survey/General Household Survey

ONS presented the plans for the future of the General Lifestyles Survey (GLF) at the recent GLF User Meeting, organised by ESDS Government and held at the ISS on 23 March. A note of the ONS presentation is available from the ESDS website at [www.csr.ac.uk/esds/events/2011-03-23/](http://www.csr.ac.uk/esds/events/2011-03-23/). In summary:

- ONS confirmed that the Family Resources Survey will be the vehicle for the EU-SILC questions (currently on GLF) from 2012 onwards
- The NHS Information Centre are proposing to withdraw funding for the 2011 GLF
- ONS propose replacing the GLF from 2012 with a new survey based on the Opinions survey



The ONS have consulted GLF users on their plans for the survey and the consultation closed on 6 May. This was a vitally important consultation as the survey series will be discontinued if users do not indicate an overriding need for the survey. ESDS Government submitted a detailed response to the consultation on behalf of GLF Users and this response can be viewed on the ESDS Government website at [www.esds.ac.uk/government/gln/consultation/](http://www.esds.ac.uk/government/gln/consultation/). ONS expect to announce the outcome of the consultation in July.

### Secure Data Service - Annual Population Survey, Quarterly Labour Force Survey and General Lifestyle Survey datasets

The Secure Data Service (SDS) is now available for UK researchers - it provides secure access to business, economic and social survey data that are deemed too detailed, sensitive or confidential to be made available under the standard licences operated by the ESDS. The Service allows researchers to analyse the data remotely from their institution with access to familiar statistical software and office tools, such as Stata, SPSS, and Microsoft Office. The following ESDS Government surveys are now available from the SDS:

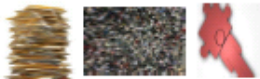
Annual Population Survey:  
[www.esds.ac.uk/findingData/hrDescription.aspx?n=4721](http://www.esds.ac.uk/findingData/hrDescription.aspx?n=4721)

Annual Population Survey Household:  
[www.esds.ac.uk/findingData/hrDescription.aspx?n=4725](http://www.esds.ac.uk/findingData/hrDescription.aspx?n=4725)

Quarterly Labour Force Survey:  
[www.esds.ac.uk/findingData/hrDescription.aspx?n=4727](http://www.esds.ac.uk/findingData/hrDescription.aspx?n=4727)

General Lifestyle Survey:  
[www.esds.ac.uk/findingData/hrDescription.aspx?n=4716](http://www.esds.ac.uk/findingData/hrDescription.aspx?n=4716)

These data are more detailed versions of existing data available through ESDS. For example some contain postcode-level data. You can find out more about the content of these datasets from the online catalogue records (accessed via the survey links above). Before applying for access, researchers should read through the catalogue records to determine if the data are suitable for their research and whether other less detailed versions of the data are available and could be used instead. The Secure Data Service provides a starting point with 'Which data do I need?' and also provides sample case studies. For more information on the Secure Data Service go to [securedata.data-archive.ac.uk](http://securedata.data-archive.ac.uk)



### Contents

Integrated Household Survey News.....	2
Case Study: Estimating age-specific fertility rates by ethnic group for population projections.....	2
Housing and the Local Environment Resources.....	3
A European workshop to introduce the EU Survey of Income and Living Conditions (EU-SILC) and the EU Labour Force Survey (EU-LFS) data.....	3
Small Area Estimation Workshop.....	3
New and updated resources.....	4
Forthcoming events from ESDS Government.....	4
Other events.....	4
Events held in the past six months.....	4

- User Meetings
- Website contains news & information about consultations/data developments
- Newsletter
  - Every 6 months
  - Contains news
    - Survey news from ONS etc
    - New ESDS resources
    - Summaries of meetings
  - Available on website
- Helpdesk



# The important last slide...

## **Helpdesk:**

govsurveys@esds.ac.uk  
(0161)275 1980

## **Website:**

<http://www.esds.ac.uk/government>

## **Jisc list:**

esds-govsurveys@jiscmail.ac.uk

