

**NatCen**

Social Research that works for society

# The Welsh Health Survey

Cath Roberts, Welsh Government

Melanie Doyle, NatCen Social Research

---

Slides prepared for Health Survey User Group, 15 July 2014



# The Welsh Health Survey



# The Welsh Health Survey

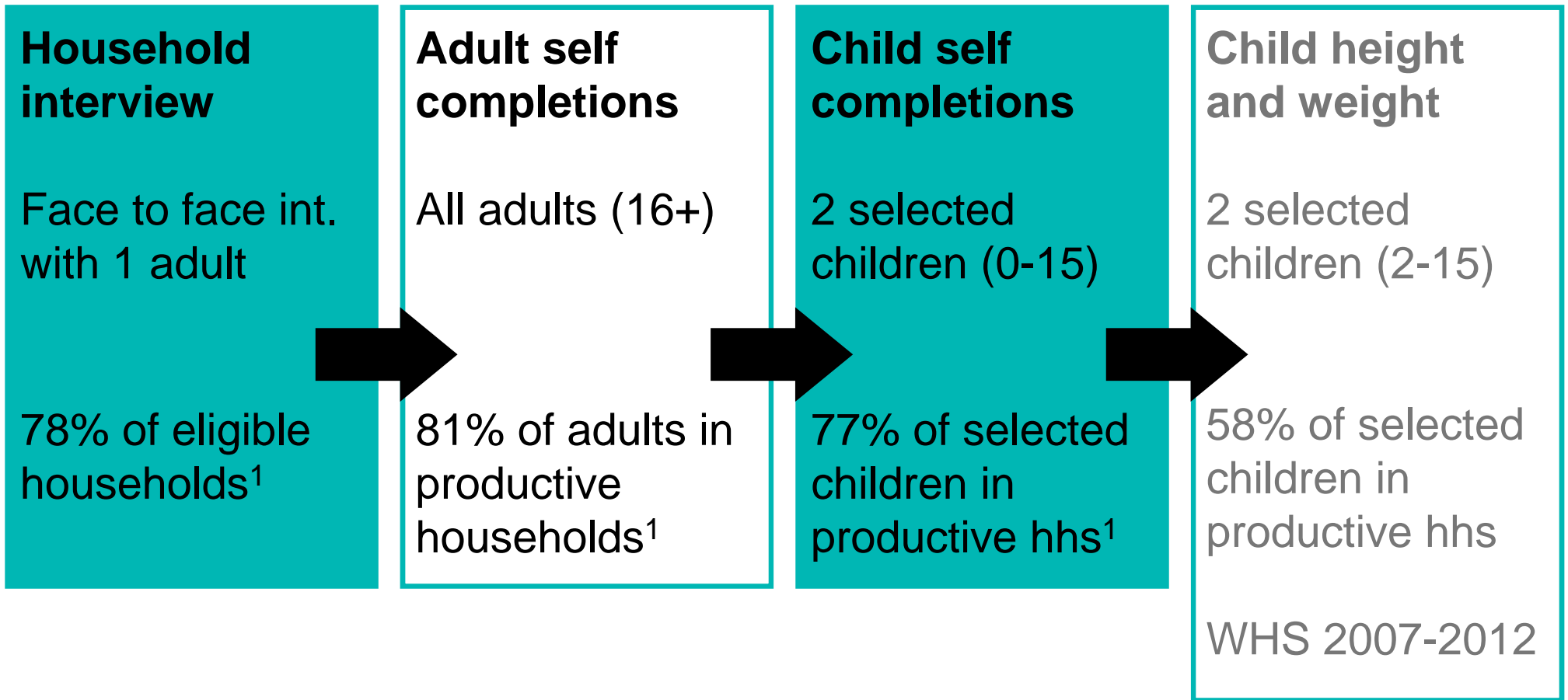
---

- 2003/4 – present
- 15,000 adults and 3,000 children each year
- At least 600 adults in each Local Authority
  
- Covers:
  - Health and illness
  - Health related lifestyle
  - Use of services



# Design and response

---



---

3 <sup>1</sup> Response based on WHS 2012. Child height and weight now in HBSC

# Adult self completion questionnaire

---

## Adults 16+

Health service use	Untreated illness
Medicines	Exercise
Illnesses	Carers
General health and wellbeing	Sex and age
Smoking	Height and weight
Alcohol	Ethnicity
Untreated illness	Qualifications
Fruit and vegetable consumption	Data linkage consent (from 2013)

# Child self completion questionnaire

---

	0-3	4-12	13-15
General health and wellbeing	●	●	●
Health service use	●	●	●
Accidents, injuries or poisoning	●	●	●
Current illnesses	●	●	●
Strengths and difficulties questionnaire		●	●
Eating habits / infant feeding	●	●	●
Physical activity		●	●
Sex, age, ethnicity	●	●	●

# Recent changes and ongoing work

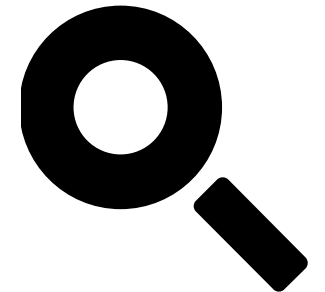


2.

# Data linkage

---

- From April, 2013
- WHS adult respondents asked for permission to link their survey responses with information from admin records
- Admin records include death, cancer registry, gp and hospital records.
- Datasets form part of the SAIL database at Swansea University
- WHS anonymised data available in 2015
- Development work carried out in 2011, report available





# Wellbeing

---

- WHS includes measures of functional health and subjective wellbeing
- SF-36 included since 2003/4: 10 years data available
- SF-36 measures of functional health status: physical and mental summary scores
- ONS-4 included since 2012
- ONS-4 measures of subjective wellbeing, happiness, anxiety and feeling worthwhile

# Wellbeing

---

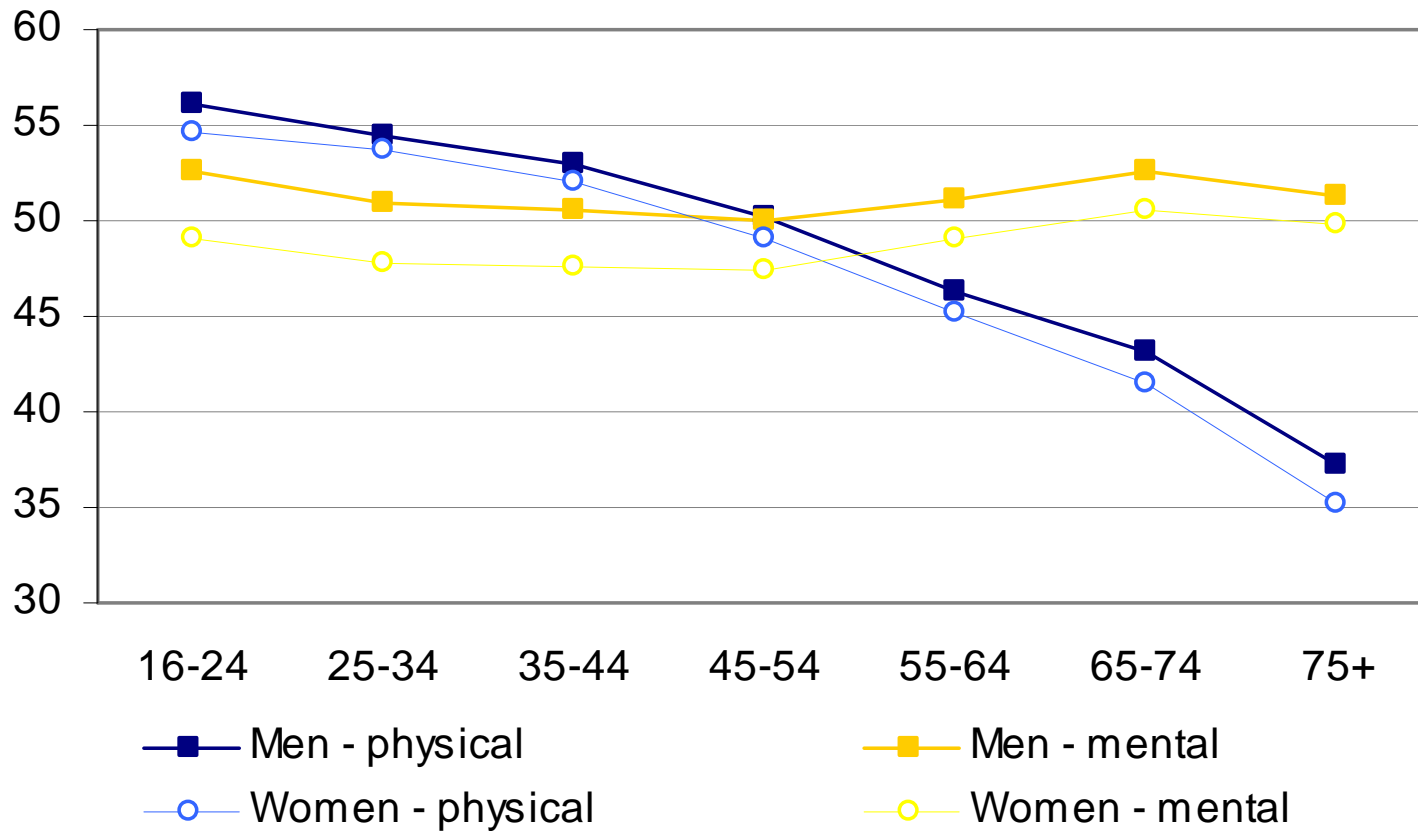
Ongoing work looking at wellbeing:

- different subgroups
- health and lifestyle
- compare different measures of wellbeing within the same population

# Wellbeing

---

Figure 1: SF-36 physical and mental component score, by age and sex

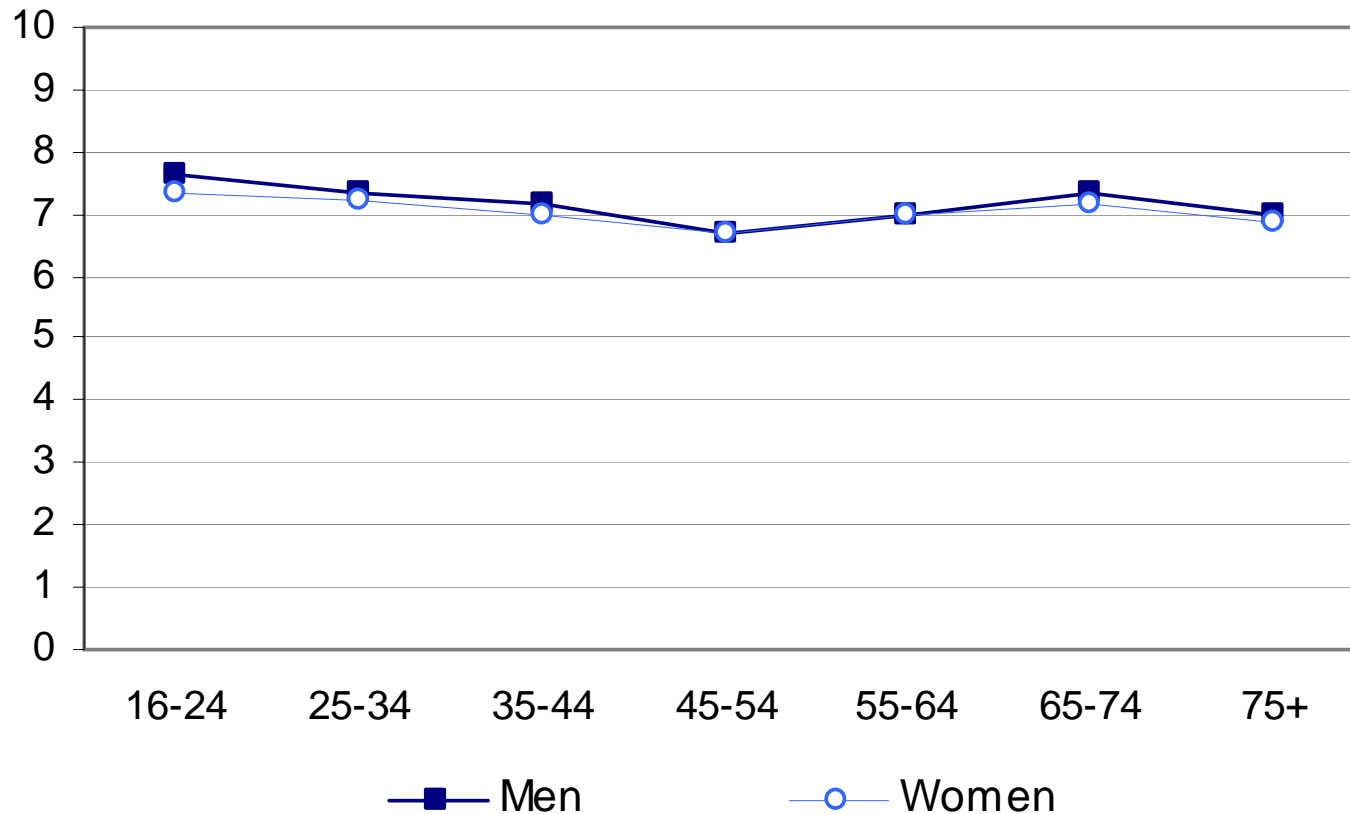


SF-36  
included in  
WHS since  
2003/4.

# Wellbeing

---

Figure 2: Life satisfaction, by age and sex



ONS-4 subjective wellbeing questions included in WHS since 2012.

# Reports and data



3.

# Main survey reports

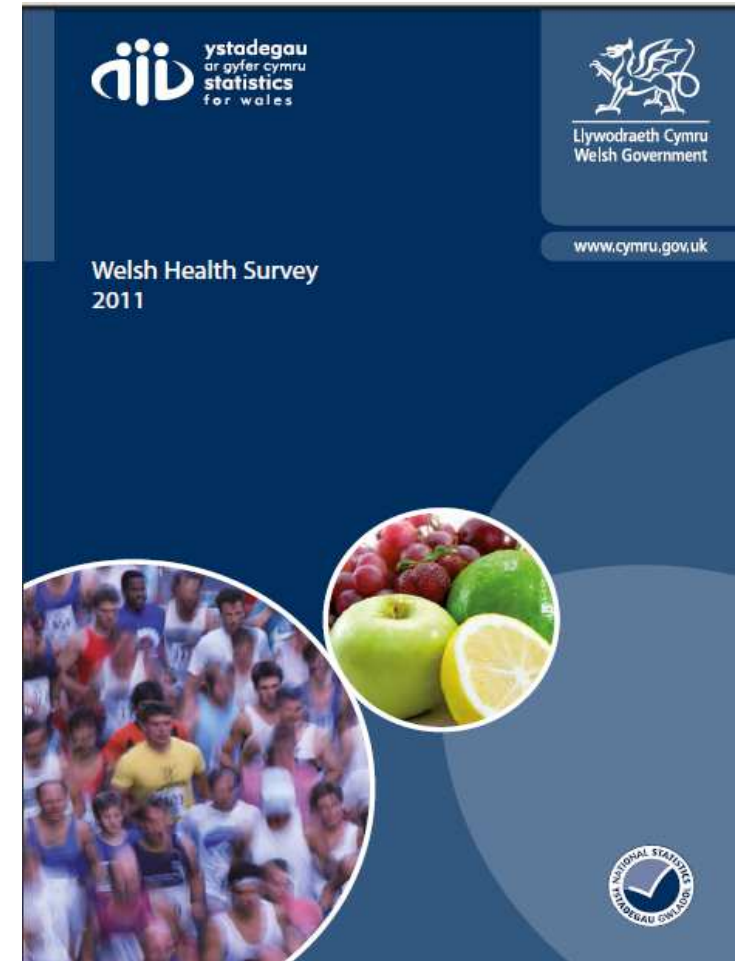
---

May

- Headline results

September

- Annual report
  - Local authority / health board report
  - Excel tables and charts published with main reports, eg trend tables
  - Technical Report
  - Ad hoc reports and briefing papers
- 



# Datasets

---

- Anonymised datasets and documentation deposited at UK data archive
- <http://www.data-archive.ac.uk/>
- Main survey data (2003/4 to present)
- Introductory datasets
- New: Local Authority available as a special licence variable for 2008 - 2012



---

# User Consultation

4.



# Future developments

---

Current contract ends after 2015 fieldwork

WHS user consultation on future approach – currently underway

Welsh Govt wider review of future options for large-scale surveys

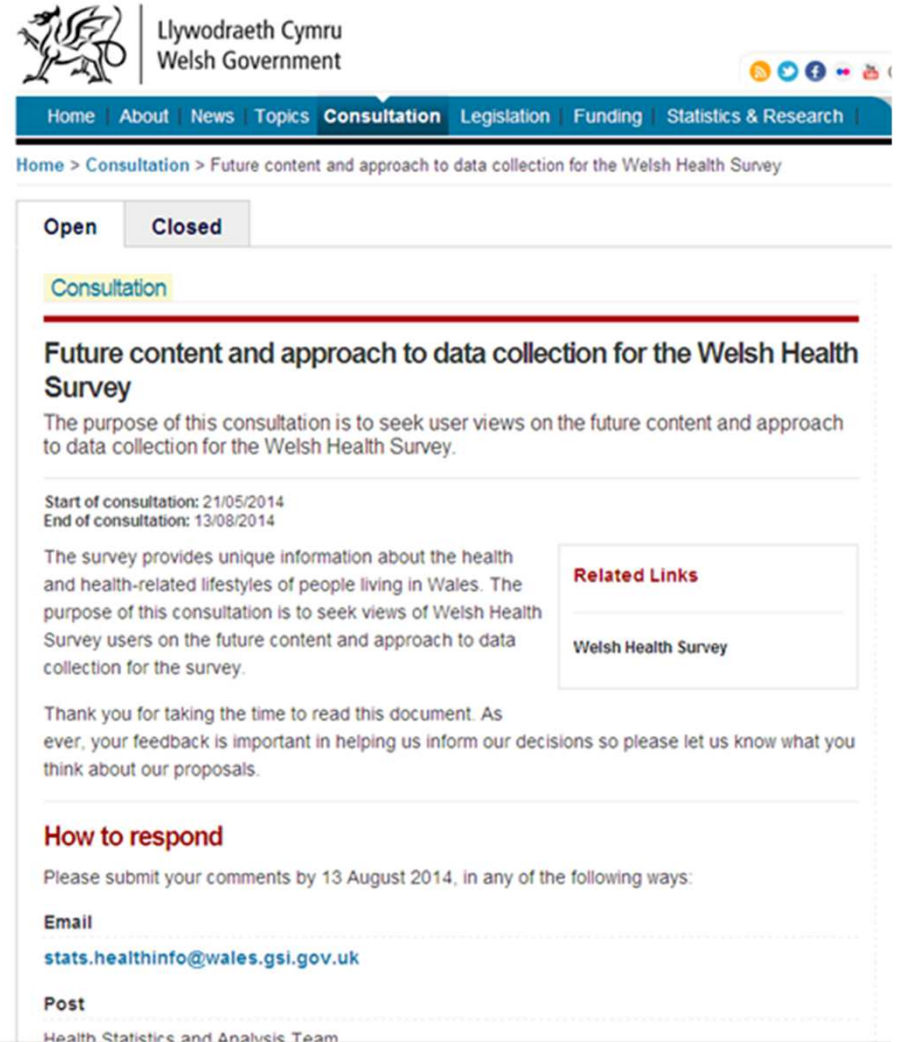
# WHS User consultation

WHS consultation on future approach

Runs 21 May – 13 August 2014

Asks about:

- Users & uses
- Content
- Sample design
- Frequency & trends
- Publications
- Priorities



The screenshot shows the Welsh Government website with the following content:

- Header:** Llywodraeth Cymru / Welsh Government. Navigation menu: Home, About, News, Topics, **Consultation**, Legislation, Funding, Statistics & Research.
- Breadcrumbs:** Home > Consultation > Future content and approach to data collection for the Welsh Health Survey
- Buttons:** Open (selected), Closed
- Section:** Consultation
- Title:** Future content and approach to data collection for the Welsh Health Survey
- Description:** The purpose of this consultation is to seek user views on the future content and approach to data collection for the Welsh Health Survey.
- Dates:** Start of consultation: 21/05/2014; End of consultation: 13/08/2014
- Text:** The survey provides unique information about the health and health-related lifestyles of people living in Wales. The purpose of this consultation is to seek views of Welsh Health Survey users on the future content and approach to data collection for the survey.
- Related Links:** Welsh Health Survey
- Text:** Thank you for taking the time to read this document. As ever, your feedback is important in helping us inform our decisions so please let us know what you think about our proposals.
- Section:** How to respond
- Text:** Please submit your comments by 13 August 2014, in any of the following ways:
- Email:** [stats.healthinfo@wales.gsi.gov.uk](mailto:stats.healthinfo@wales.gsi.gov.uk)
- Post:** Health Statistics and Analysis Team

# Useful links

---

To contribute to the User Consultation:

<http://wales.gov.uk/consultations/statistics/future-content-approach-data-collection-welsh-health-survey/?lang=en>

before 13 August

Reports and information available on the WHS theme page at:

[www.wales.gov.uk/topics/statistics/theme/health/health-survey](http://www.wales.gov.uk/topics/statistics/theme/health/health-survey)

For regular updates, or if you have a query about the survey, contact [\*\*Stats.healthinfo@wales.gsi.gov.uk\*\*](mailto:Stats.healthinfo@wales.gsi.gov.uk)

# Thank you

---

If you want further information or would like to contact the author,

**Melanie Doyle**

E. [melanie.doyle@natcen.ac.uk](mailto:melanie.doyle@natcen.ac.uk)

**Visit us online, [natcen.ac.uk](http://natcen.ac.uk)**

**NatCen**

**Social Research** that works for society