

The 'before, after and in between' of immigration.
Criminal interactions of
foreign born people in
England and Wales.

Dr Dainis Ignatans
University of Huddersfield

Kajetan Zielinski
Warsaw School of Economics

Greg Los
University of Kent

Immigration and Crime – Is there a link?

USA

Self report studies indicate low criminal involvement amongst immigrants.

(Kubrin and Desmond, 2009; Butcher and Piehl, 1998)

Immigration revitalizes the areas leading to lower crime rate.

(Sampson, 2008; Kubrin, 2012)

Violence decreases when migrant concentration increases.

(Stowell, 2012; Wadsworth, 2010, Velez, 2009; Martinez et al., 2004)

Immigration bolsters the economy and lowers crime rates.

(Ousey and Kubrin, 2009)

Europe

Immigrants more likely to be arrested and imprisoned.

(Albrecht, 1999; van Kalmthout, et al. 2007; Tonry, 1997)

Crime by immigrants significantly lower in recent years.

(Entorf and Larsen, 2004)

Immigrants from similar culture as natives committing fewer crimes than other immigrants.

(Alonso-Borego, 2012)

Unemployed migrants commit majority of crime by immigrants.

(Bircan and Hooghe, 2011)

UK

Asylum seekers commit more property crime, European immigrants commit it less and have low unemployment rates.

(Bell, Machin and Fasani, 2010; Bell and Machin, 2011; Jaitman and Machin, 2013)

Rationale of the research.

1) Immigration and crime link is inappropriately assumed to be linear.

Concentration of immigration is very uneven and so is its impact on crime.

2) Crime rates at one point in time are not indicative of change. Change is not indicative of situation at the time.

Very high crime rates + drop in crime = still high crime rates.

3) Interactions between immigrant groups with different origins are neglected.

Sole definable immigrant groups tend to be prevalent in most residential areas whereas multi-cultural areas are uncommon. What is the reason and how does crime/victimisation link into this?

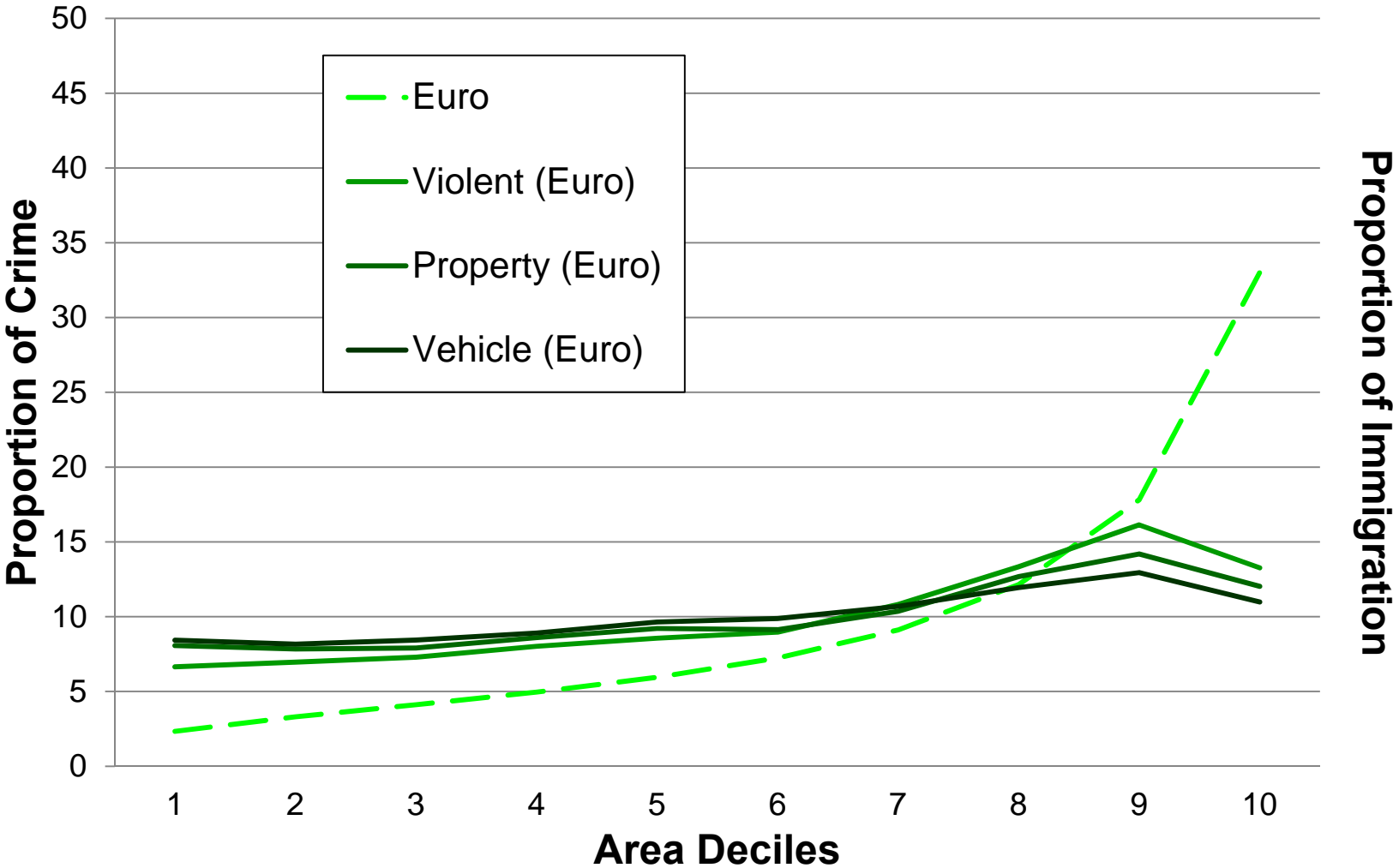
Part 1.

Where are all the immigrants?

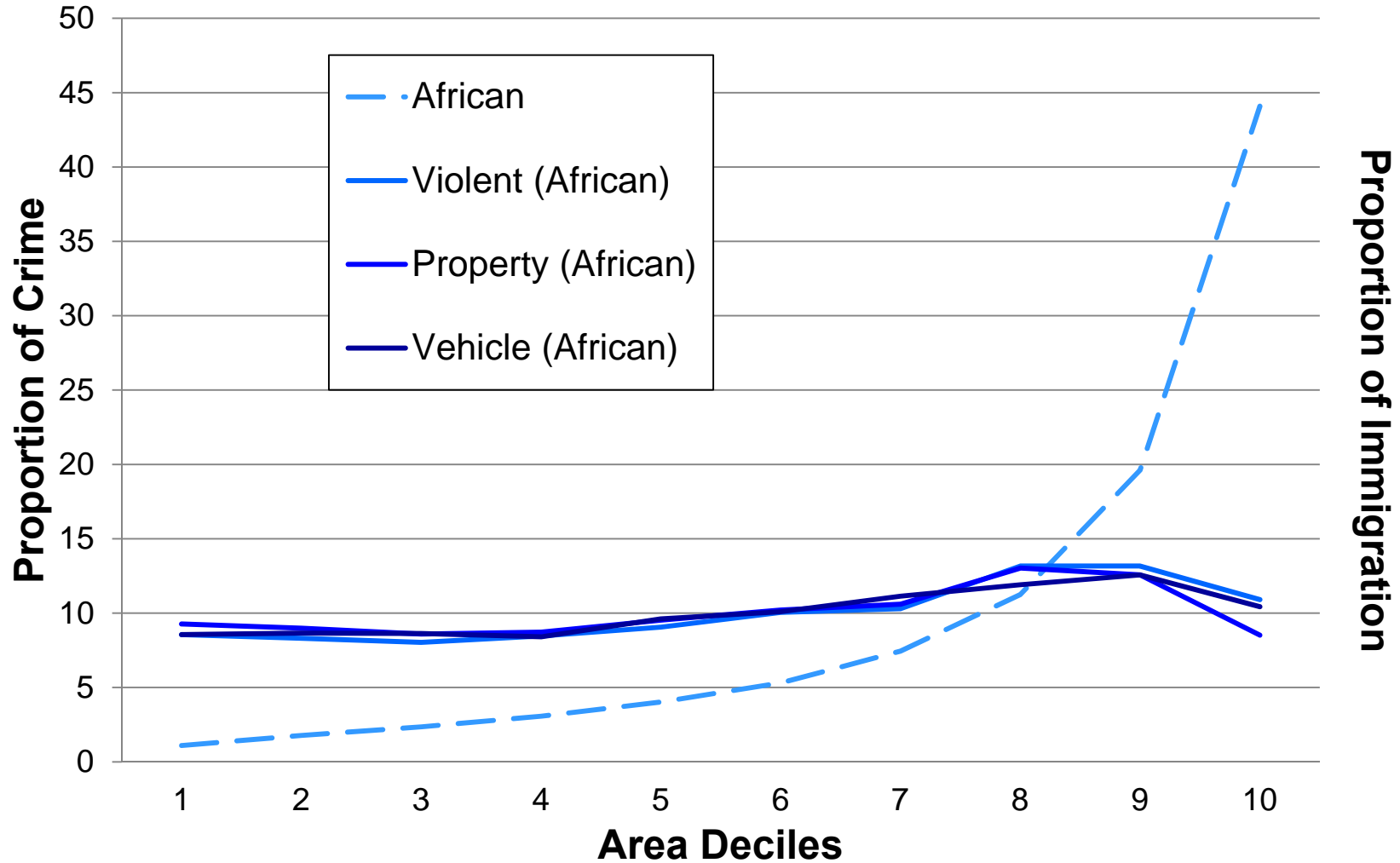
OR

How the relationship between
immigration and crime is by no means
linear.

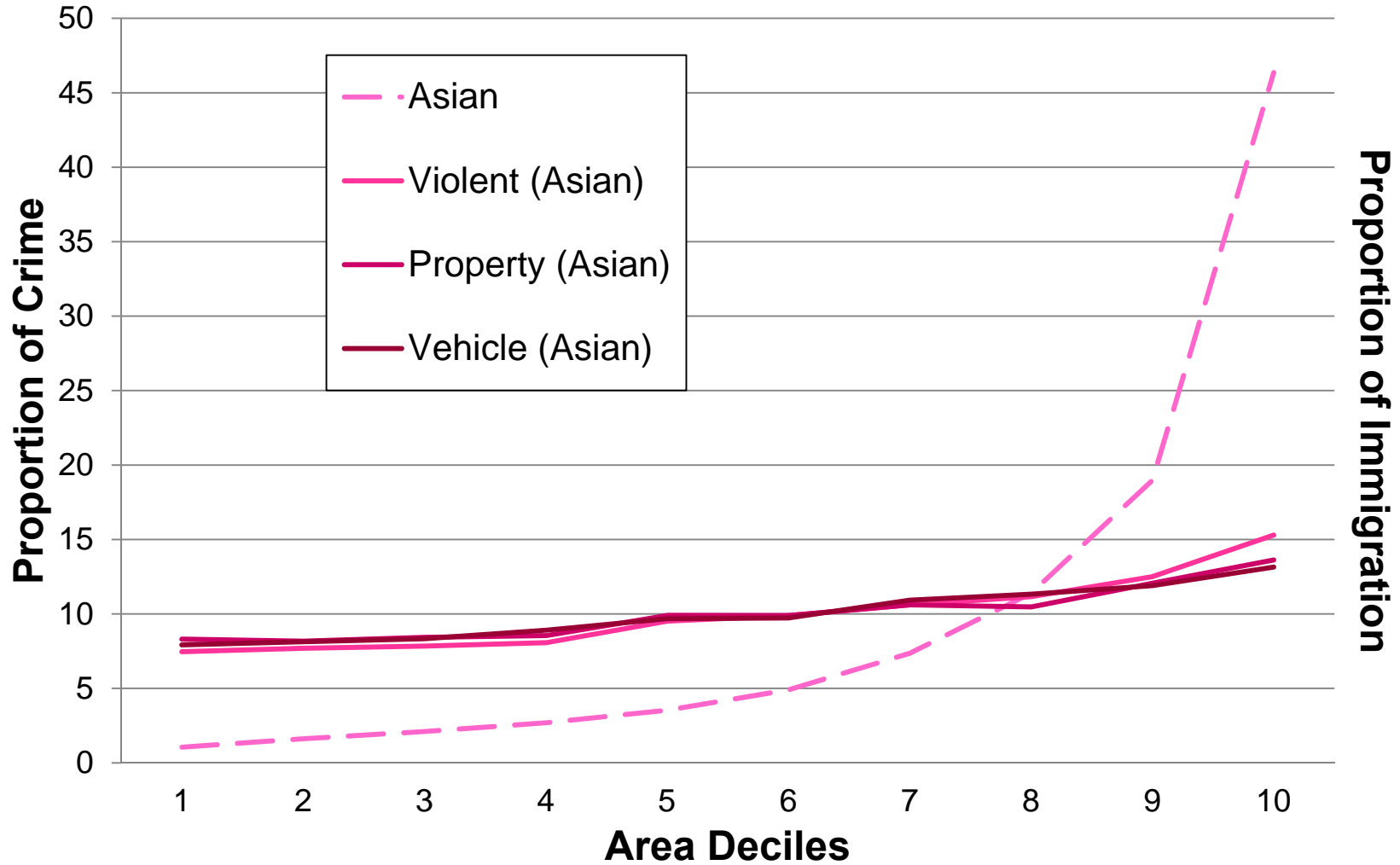
Proportional distribution of European immigration and for respective violent, property and vehicle crimes for the year of 2011.



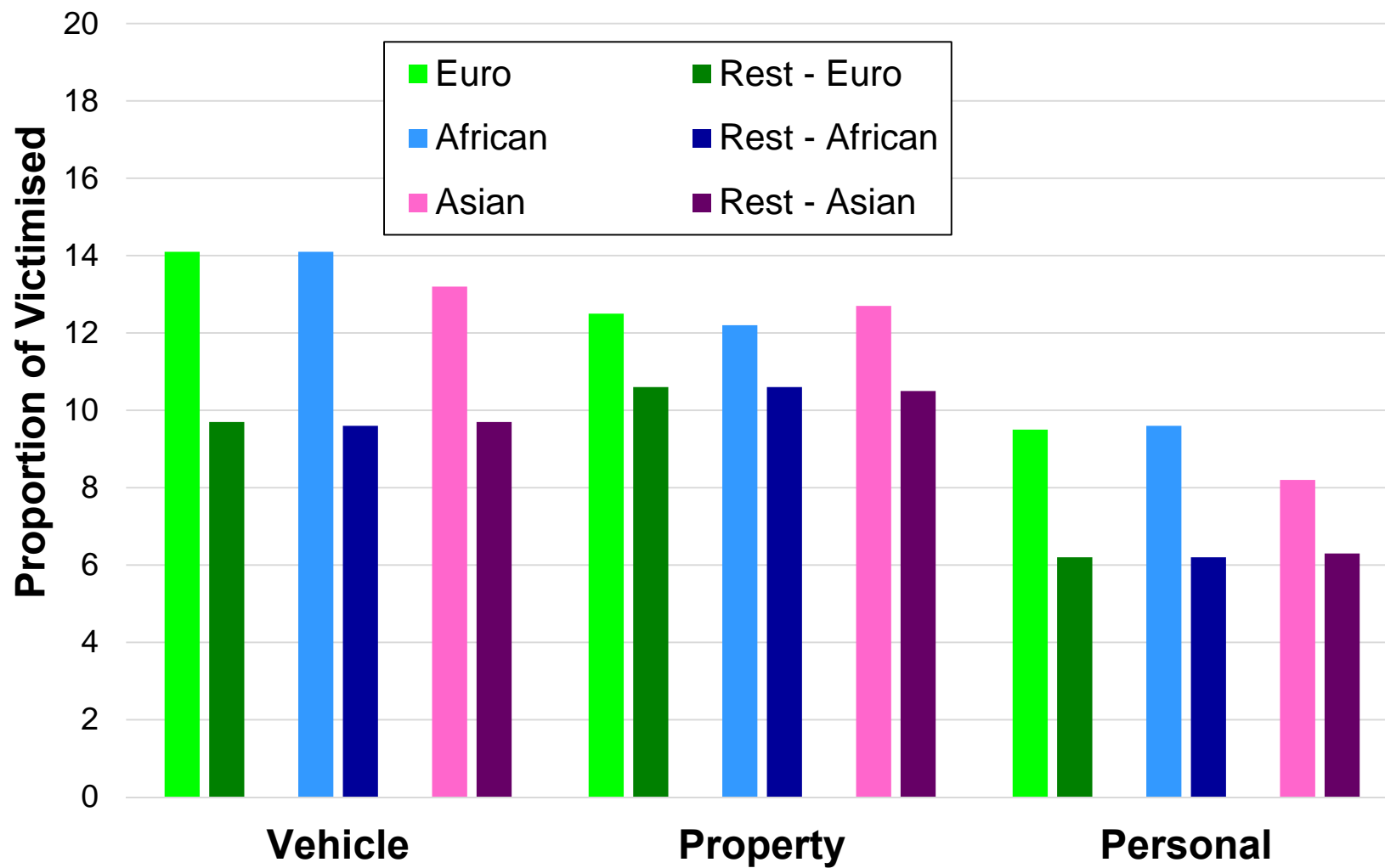
Proportional distribution of African immigration and for respective violent, property and vehicle crimes for the year of 2011.



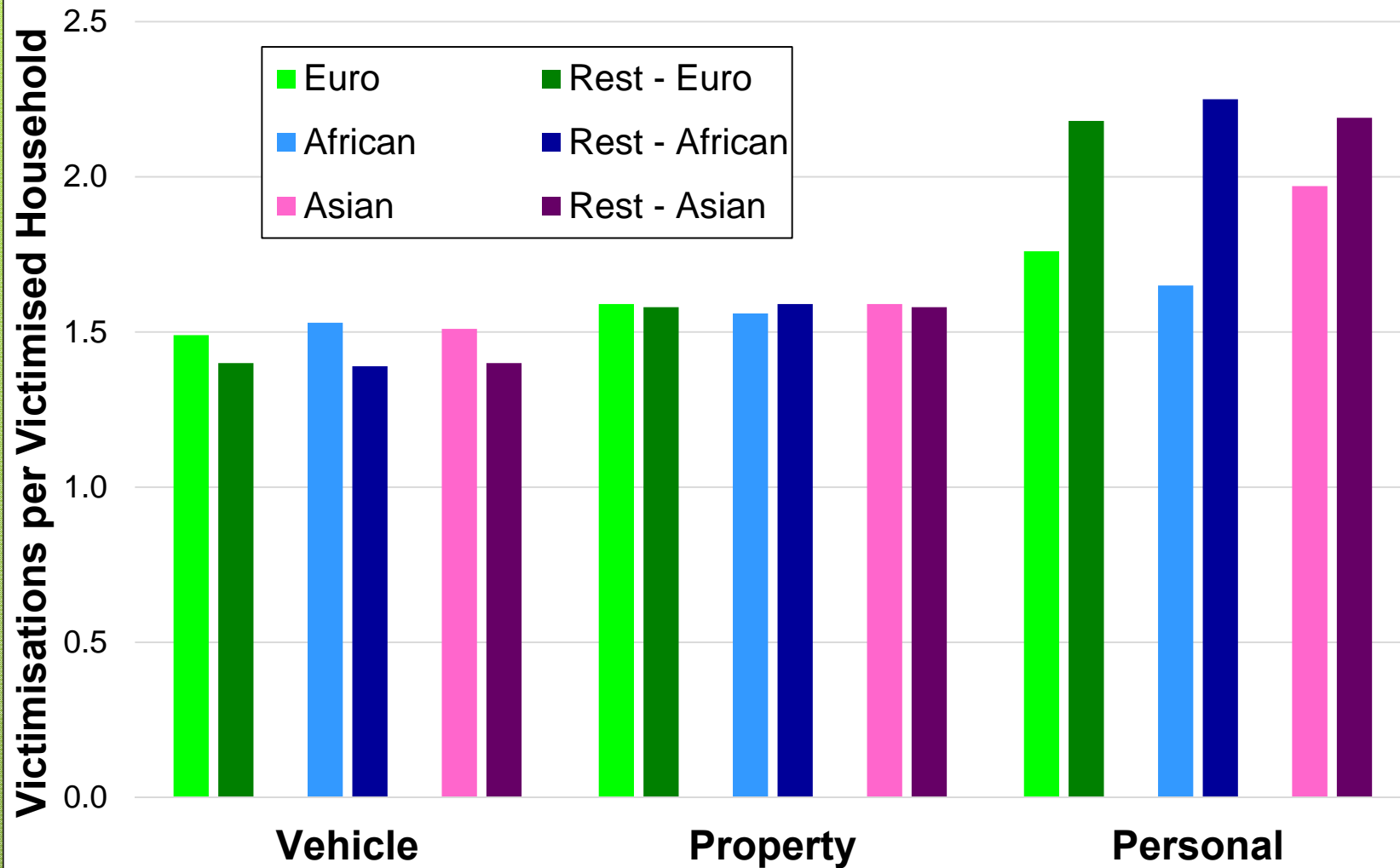
Proportional distribution of Asian immigration and for respective violent, property and vehicle crimes for the year of 2011.



Proportion of victimised in top area deciles by immigrant continent of birth and the rest, CSEW 2011-2012.



Victimisations per victimised household in top area deciles by immigrant continent of birth and the rest, CSEW 2011-2012.



Part 1 - Summary.

Immigration populations are highly concentrated.

Areas with highest European and African immigrant populations are somewhat lower in rates of police-recorded crime than the areas with fewer immigrants.

Areas with highest Asian immigrant populations have a significantly lower crime/immigration ratio than the areas with fewer immigrants.

Increase in crime rates up until 7th-8th deciles is minor for all areas.

CSEW data shows that average victimisation is lower in areas with high concentration of immigrants.

~~Linearity~~

Part 2.

Have crime rates changed in areas with highest immigrant concentration?

OR

It is so easy to miss an elephant in a room that is already grey.

Part 2 - Summary.

In 2001, areas where immigrant influx was high/would be higher/would change the most already had:

- Higher violent crime rates
- Lower property crime rates
- Less fortunate economic circumstances

In 2011, areas where immigrant influx was high since 2001/was high at the time/had changed the most had:

- Higher violent crime rates
- Lower property crime rates
- Less fortunate economic circumstances

Between 2001 and 2011, areas where immigrant influx was high since 2001/was high in 2011/had changed the most experienced:

- Greater drop in violent crimes
- Somewhat greater increase in car crimes (but not property crimes in general)
- A greater improvement in economy

“Before, After and In Between”

Part 3.

Who commits all the crimes and
where?

OR

How the relationships between
immigrant sub groups are essential in
understanding crime.

Violent, property and vehicle crime rates by immigration population in 2011.

Higher than average.

Lower than average.

2011		Mean	Standard Error	N
None	Violent	1.06	.013	5894
	Property	3.98	.039	
	Vehicle	.59	.005	
Euro	Violent	1.96	.146	230
	Property	6.72	.523	
	Vehicle	.78	.026	
African	Violent	1.27	.081	145
	Property	3.56	.245	
	Vehicle	.63	.039	
Asian	Violent	2.29	.175	267
	Property	7.52	.619	
	Vehicle	1.01	.043	
Euro + African	Violent	1.11	.061	210
	Property	3.07	.193	
	Vehicle	.58	.027	
Euro + Asian	Violent	1.95	.237	88
	Property	8.00	1.292	
	Vehicle	.73	.056	
African + Asian	Violent	1.40	.099	173
	Property	3.88	.265	
	Vehicle	.74	.044	
Euro + African + Asian	Violent	1.33	.162	194
	Property	3.90	.518	
	Vehicle	.64	.032	

Victim immigration status and offenders ethnicity (where known) in areas with high immigrant concentration versus the rest, CSEW 2011-12.

	All E&W	Euro	African	Asian
Immigrant Victim	9%	9%	9.2%	7.8%
White Immigrant Victim	3.7%	3.2%	3.2%	2.2%
Black Immigrant Victim	1.8%	1.9%	2%	1.8%
Asian Immigrant Victim	3.6%	4%	4%	3.8%
White Offender	88.80%	85.20%	86.5%	87.9%
Black Offender	7.60%	10.40%	9%	6.6%
Asian Offender	3.60%	4.30%	4.5%	5.5%

Offences committed against immigrants and non-immigrants by offenders ethnicity (where known), CSEW 2011 – 12.

	White Offender	Black Offender	Asian Offender
Non Immigrant Victim	90.30%	6.60%	3.1%
European Immigrant Victim	70.70%	22.8%	6.5%
African Immigrant Victim	68.70%	25%	6.3%
Asian Immigrant Victim	61.90%	17.5%	20.6%

Part 3 - Summary.

Areas with two or more prevalent immigrant groups have (by large) higher crime rates than areas with the same immigrant groups on their own.

Areas with high populations of European and Asian immigrants have the highest crime rates and are least common.

Areas with high populations of European and African immigrants have the lowest crime rates and are most common.

Immigrant victims are spread throughout the areas and are not concentrated in areas where immigration is prevalent (less likely to be victimised)

Offenders from all ethnicities are spread throughout the areas and are not disproportionately concentrated where immigration is prevalent (less likely to offend).

Victim-offender interactions suggest that offending is within-category rather than between-category for the UK as a whole. But...

Victim-Offender Interactions

Summary of the ideas...

- 1) Immigration and crime link is not linear.** Areas where immigration is most concentrated have lower crime and victimisation rates as opposed to 9th deciles.
- 2) Crime rates at one single point in time are not indicative of change. The change is not indicative of existing situation.** Areas where immigration is most concentrated have high violent crime rates and low property crime rates, yet violent crime has dropped in them the most. Economy is improving.
- 3) Interactions between/within immigrants are crucial in understanding immigration-crime link.** Crimes committed against immigrants are disproportionately committed by offenders from the same ethnicity (not necessarily immigrant status) throughout the UK. More analyses are necessary.

Thank you!

Dr Dainis Ignatans
University of Huddersfield
d.ignatans@hud.ac.uk

Kajetan Zielinski
Warsaw School of Economics
kajetan.zielinski@gmail.com

Greg Los
University of Kent
gl236@kent.ac.uk