

# The British Election Study

Professor Ed Fieldhouse (Manchester)

Professor Jane Green (Manchester)

Professor Geoffrey Evans (Oxford)

Professor Hermann Schmitt (Manchester)

Professor Cees van der Eijk (Nottingham)

Dr Jon Mellon (Manchester)

Dr Chris Prosser (Manchester)

[www.britishelectionstudy.com](http://www.britishelectionstudy.com)

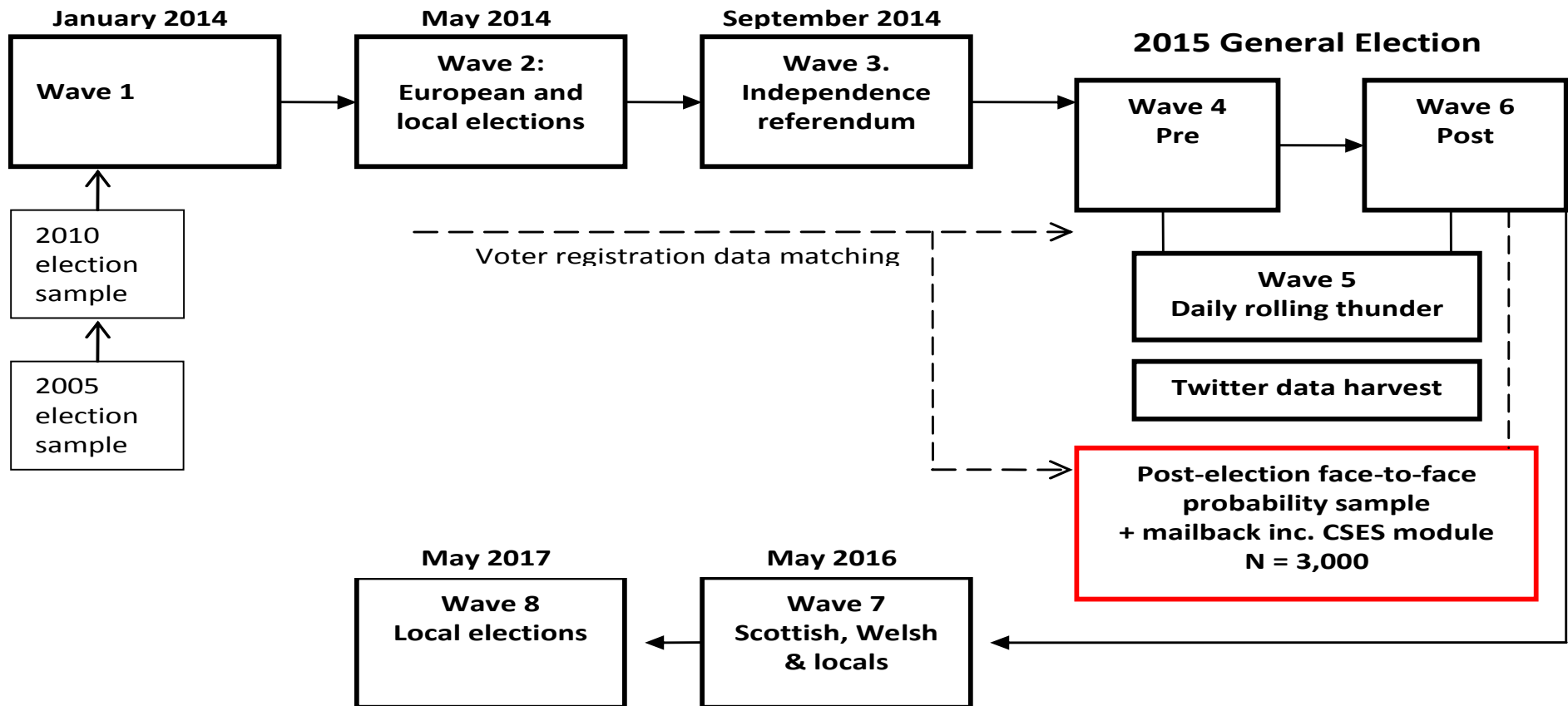
# The British Election Study

- Running since 1963
- Funded by the Economic and Social Research Council
- 2015 and 2017 BES at University of Manchester in partnership with Oxford and Nottingham
- Important source of data for academics, pollsters, the media, and the public
- Understanding British politics in an unstable and unpredictable time
- *The Volatile Voter*, Oxford University Press, 2018.
- Key role in the British Polling Council Polling Inquiry into 2015 polls
- Shortlisted for a 2017 ESRC Celebrating Impact prize

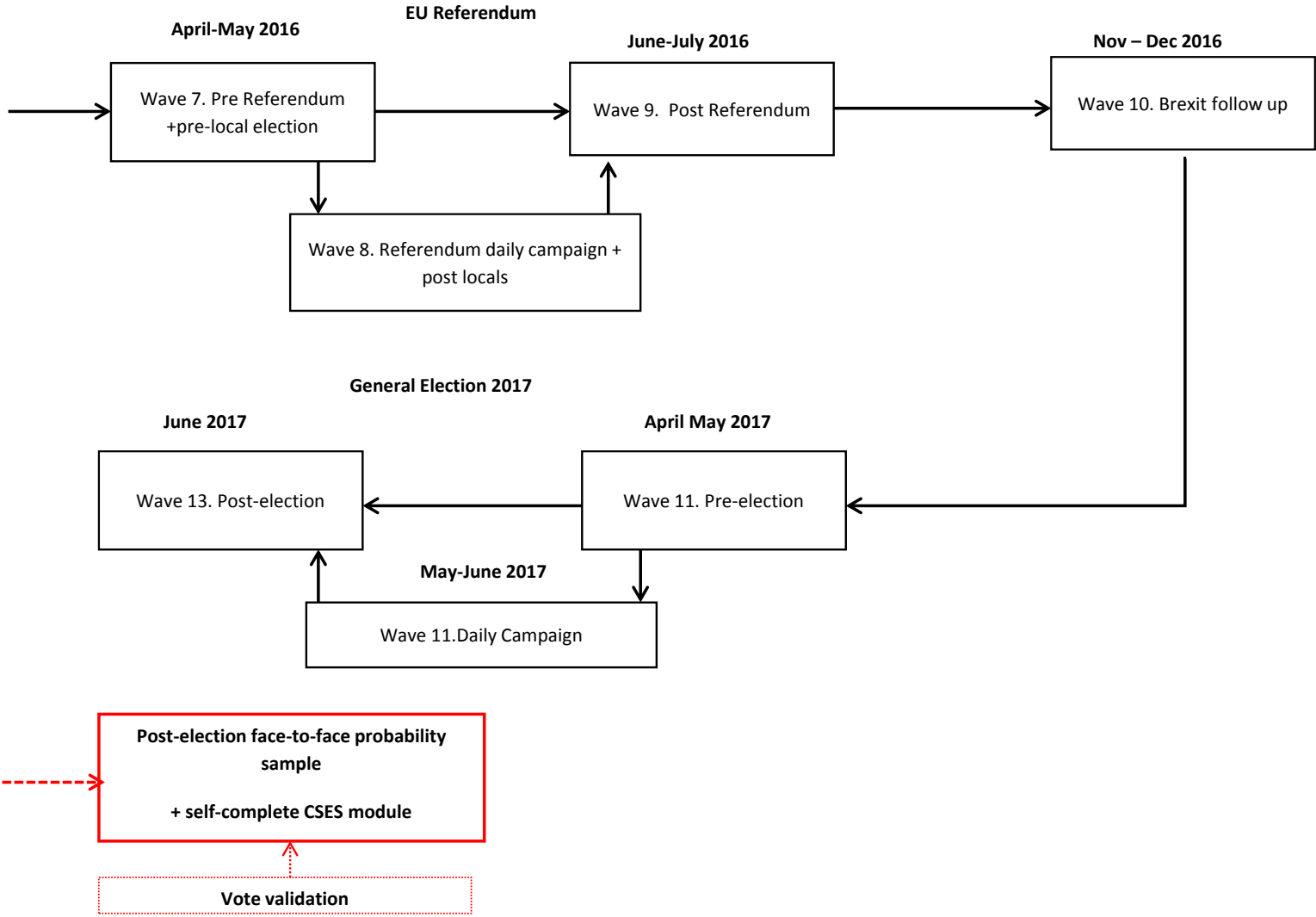
# The British Election Study Series

- 1963-1970 – Butler & Stokes, Political Change in Britain
  - 1963, 1964, 1966 cross sections. 1963-1970 panel
- 1969-1979 – Crew, Robertson, & Sarlvik, British Election Study
  - 1974 Feb, 1974 Oct, 1975 EEC Referendum, 1979 cross sections. 1969-1974 Panel, 1974-1979 panel
- 1983-2001 Heath, Jowell & Curtice, British General Election Study
  - 1983, 1987, 1992, 1997 cross sections. 1983-1987, 1987-1992, 1992-1997, 1997-2001 panels
- 2001-2010 Clarke, Sanders, Stewart & Whiteley, British Election Study
  - 2001, 2005, 2010 cross sections. 2005-2010 internet panel
- 2014-Now Fieldhouse, Green, Evans, Schmitt, van der Eijk, Mellon & Prosser, British Election Study
  - 2015, 2017 cross sections, 2014-2018 internet panel (+ linking variables to 2005-2010 panel)

# 2015 Study: Timeline



Additional components



# Recent data releases (2017)

- Panel waves
  - Wave 13 June 2017 - June 2017 N = 31,196
  - Wave 12 May 2017 - June 2017 N = 34,464
  - Wave 11 April 2017 - May 2017 N = 31,014
  - Wave 10 November 2016 - December 2016 N = 30,319
- Cumulative files
  - Combined Wave 1-13
  - Combined Wave 1-10
- 2017 General Election results file
- UKDS Deposits
  - British Election Study, 2015: Face-to-Face Post-Election Survey with LSOA+NS-SEC
  - British Election Study, 2015: Internet Panel, Waves 1-6 with MSOA and occupation, SOC 2010, links to 2005 and 2010

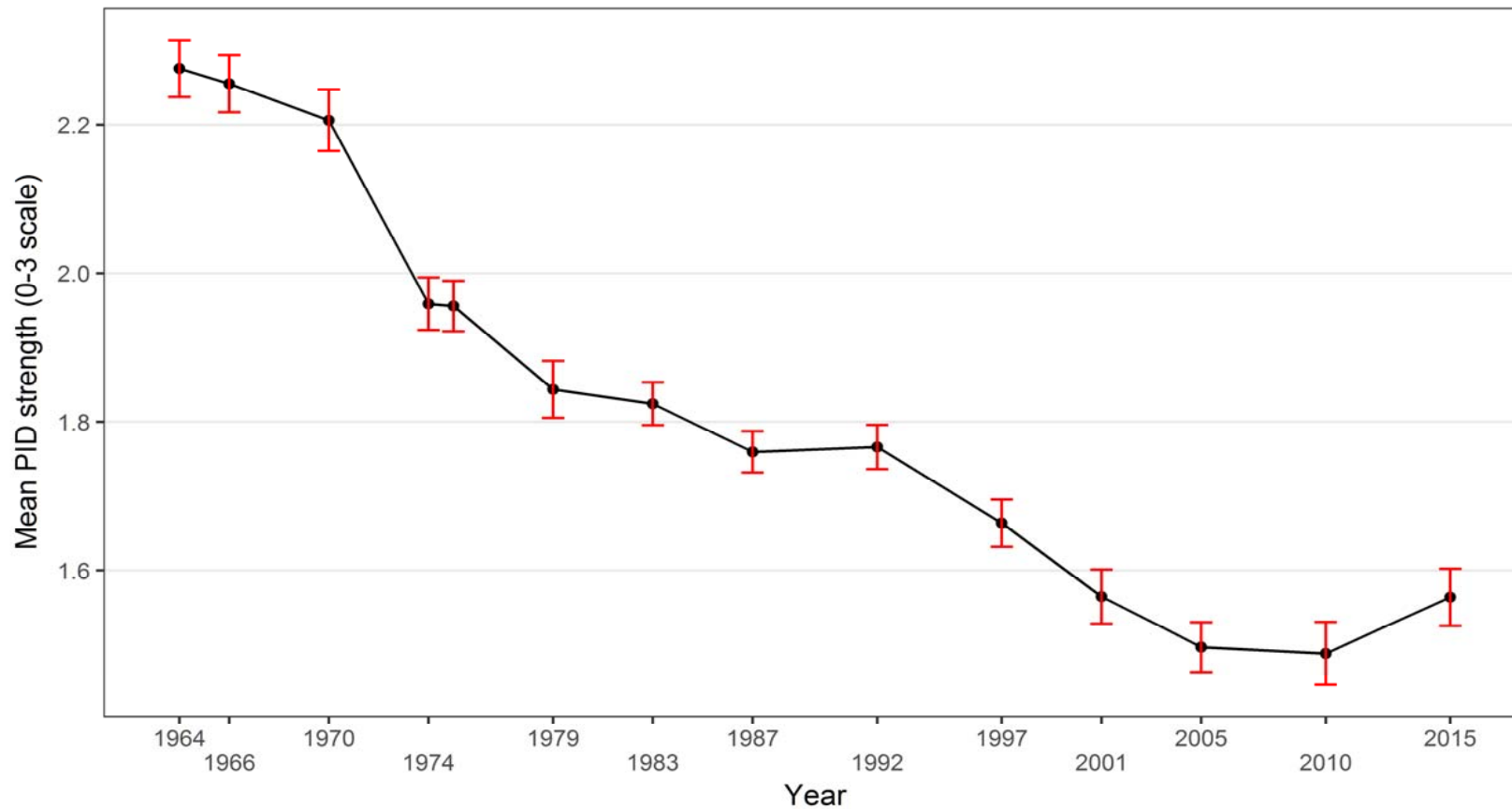
# Understanding the 2017 Election

- Commissioned by BBC News website
- Using BES Panel data, which covers key events since 2014, including:
  - Scottish Independence Referendum
  - 2015 Election
  - EU Referendum
  - 2017 Election
- Key factors in 2017 election
  - Brexit & the realignment on the liberal-authoritarian dimension
  - Leadership and the campaign
  - Scotland

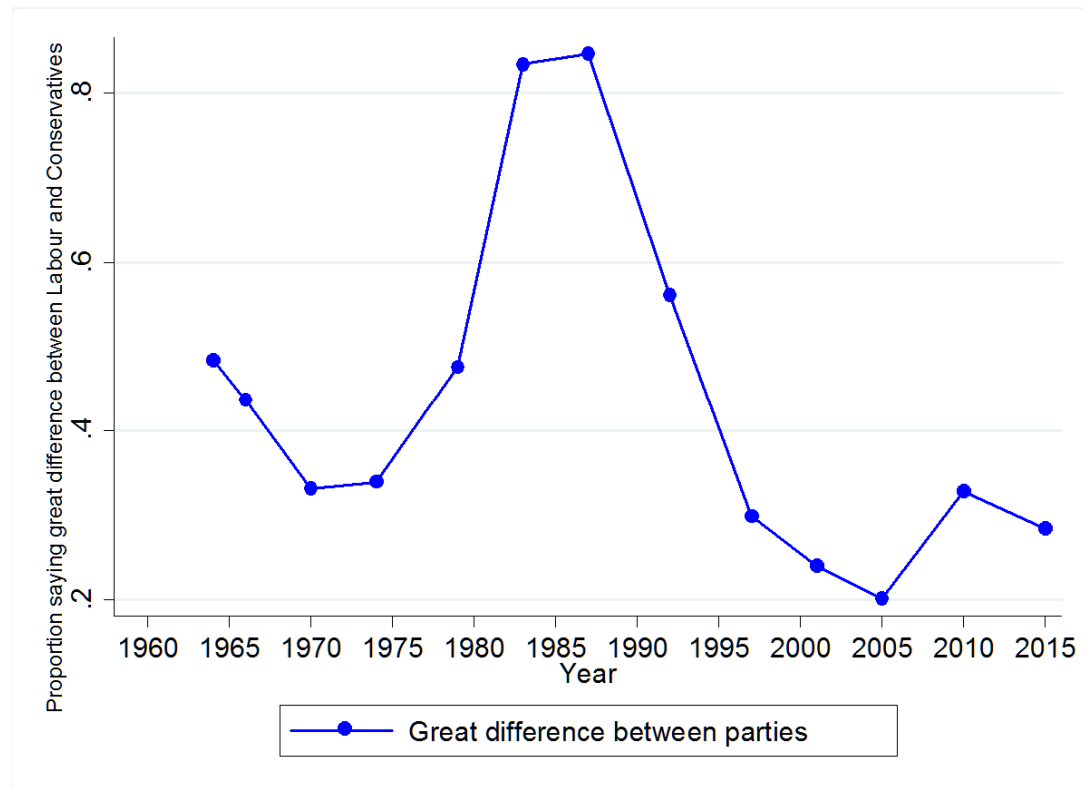
Research Examples using the  
post-election cross-section series



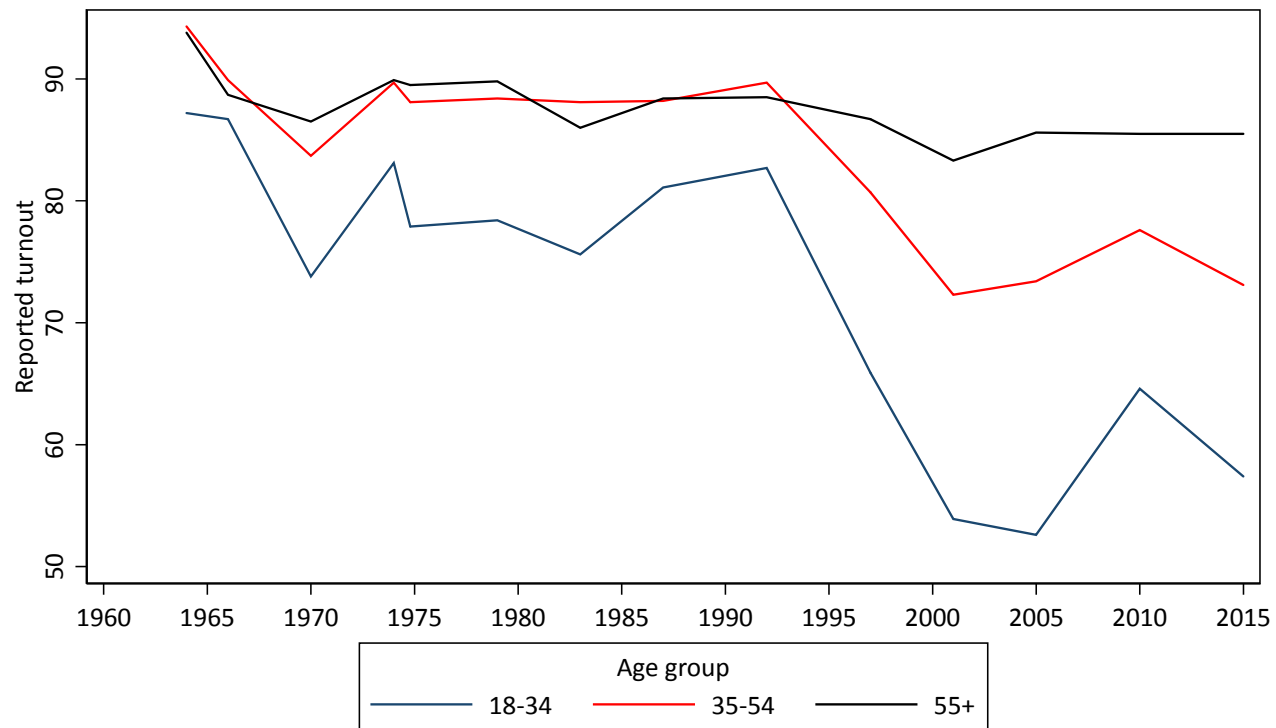
# Mean strength of partisan identity 1964-2015



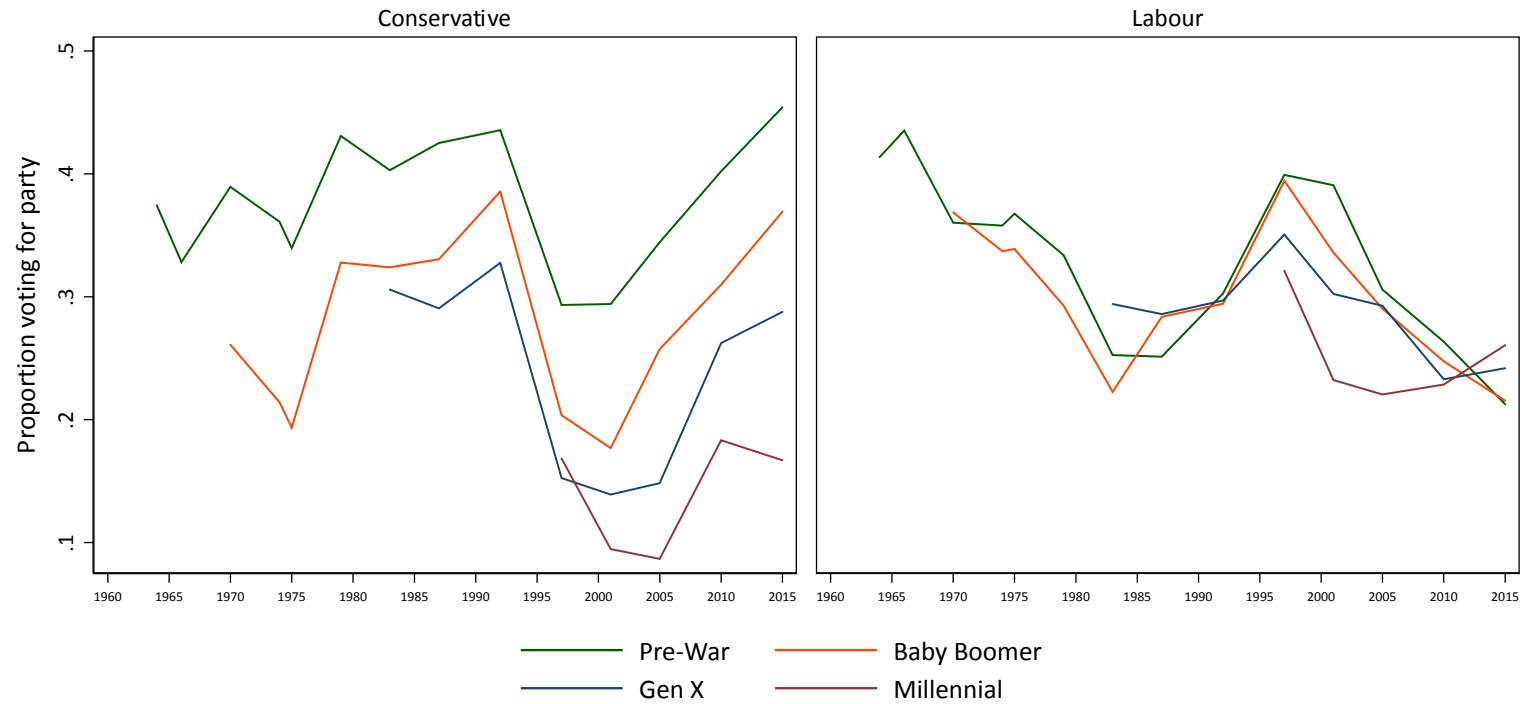
# Perceived difference between Con and Lab, 1964-2015



# Reported turnout by age group, 1964-2015

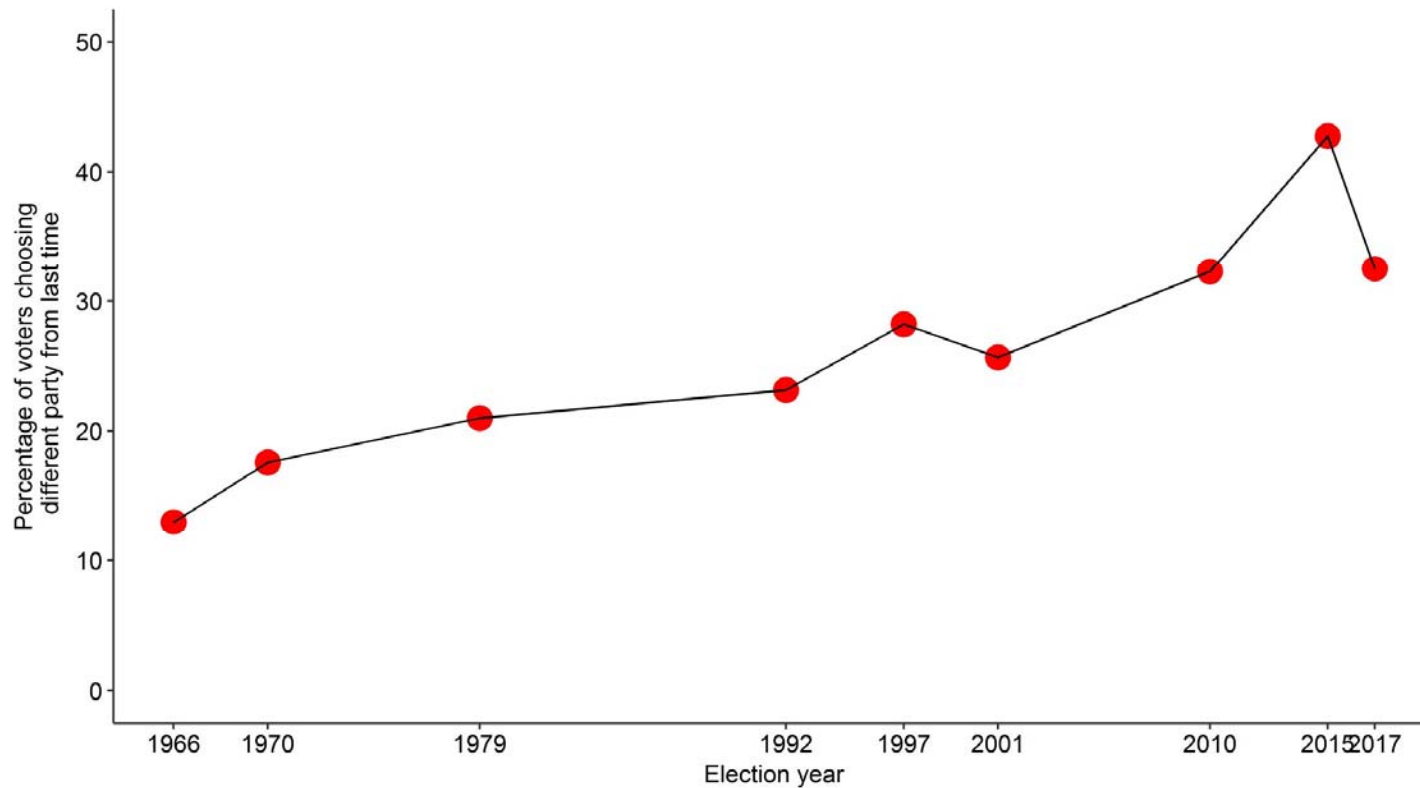


# Generational differences in vote choice, 1964-2015

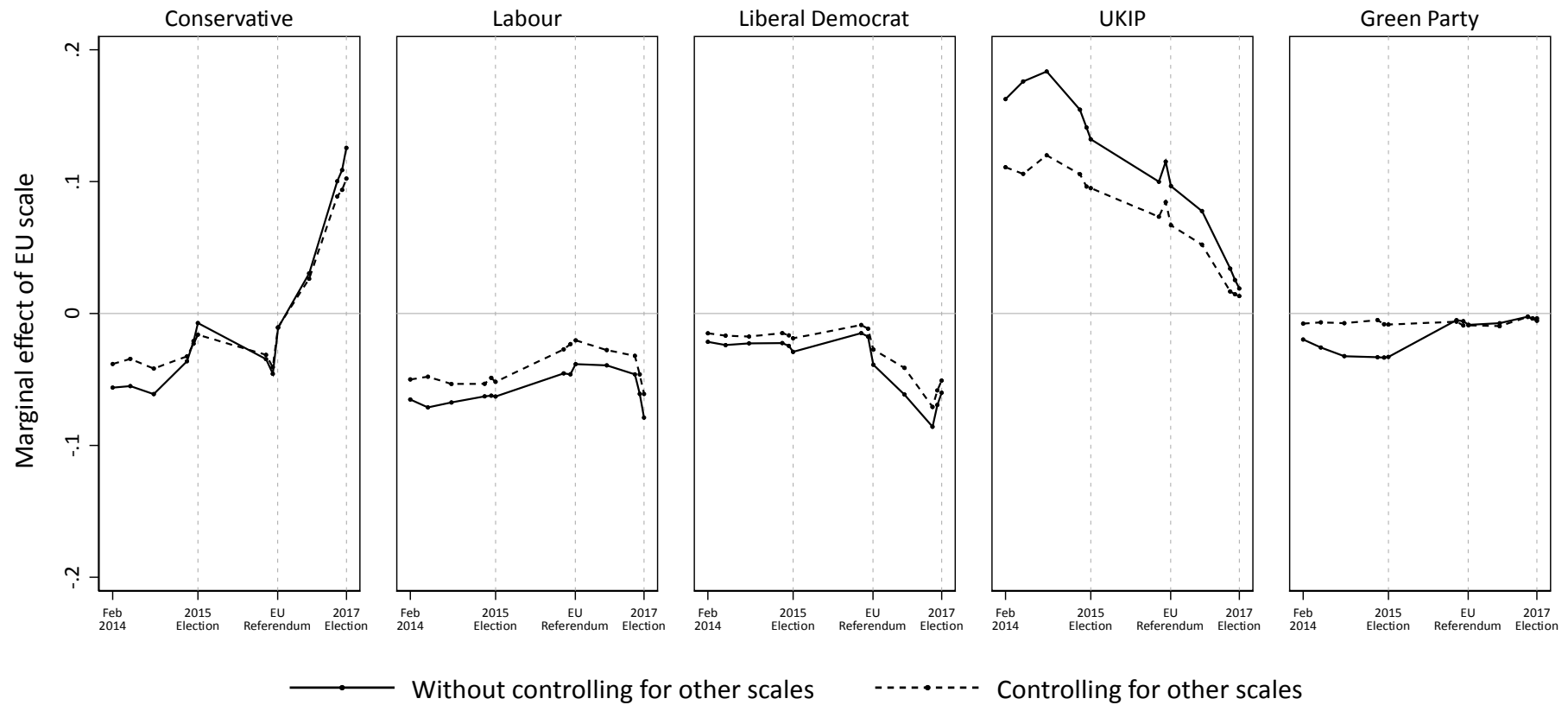


# Research Examples using panel data

# Voter volatility, 1964-2017 (inter-election panels)



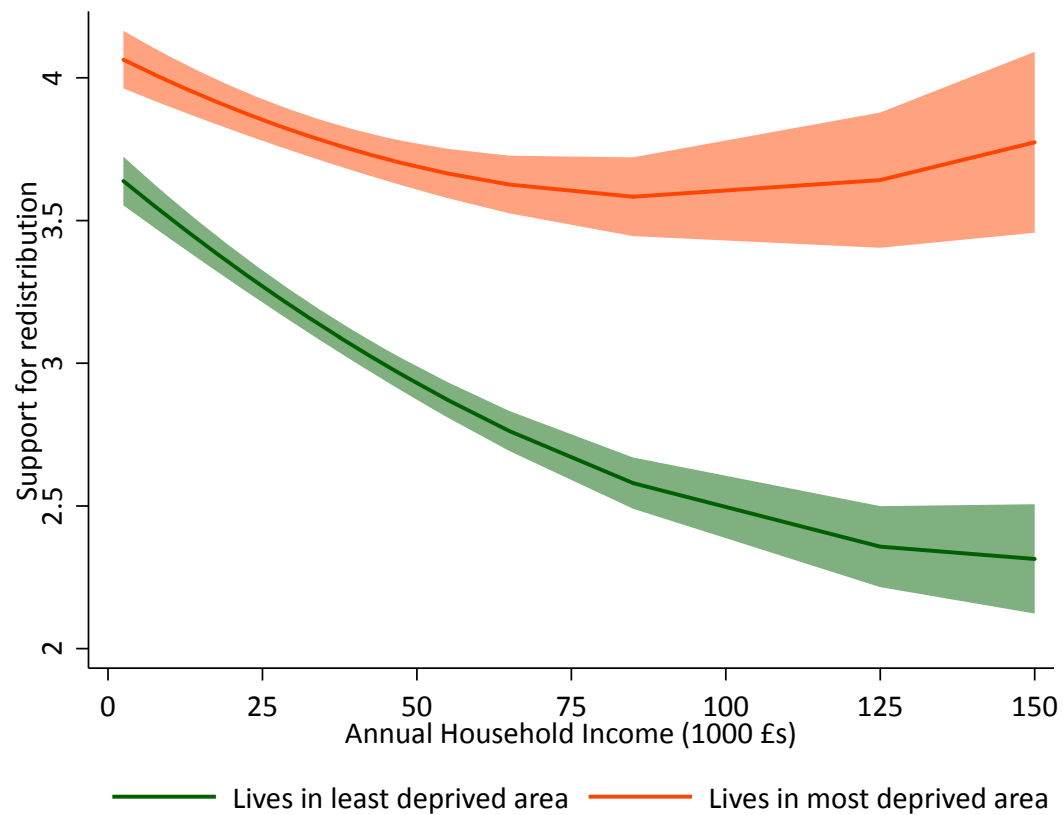
# Changing effect of EU attitudes on vote choice



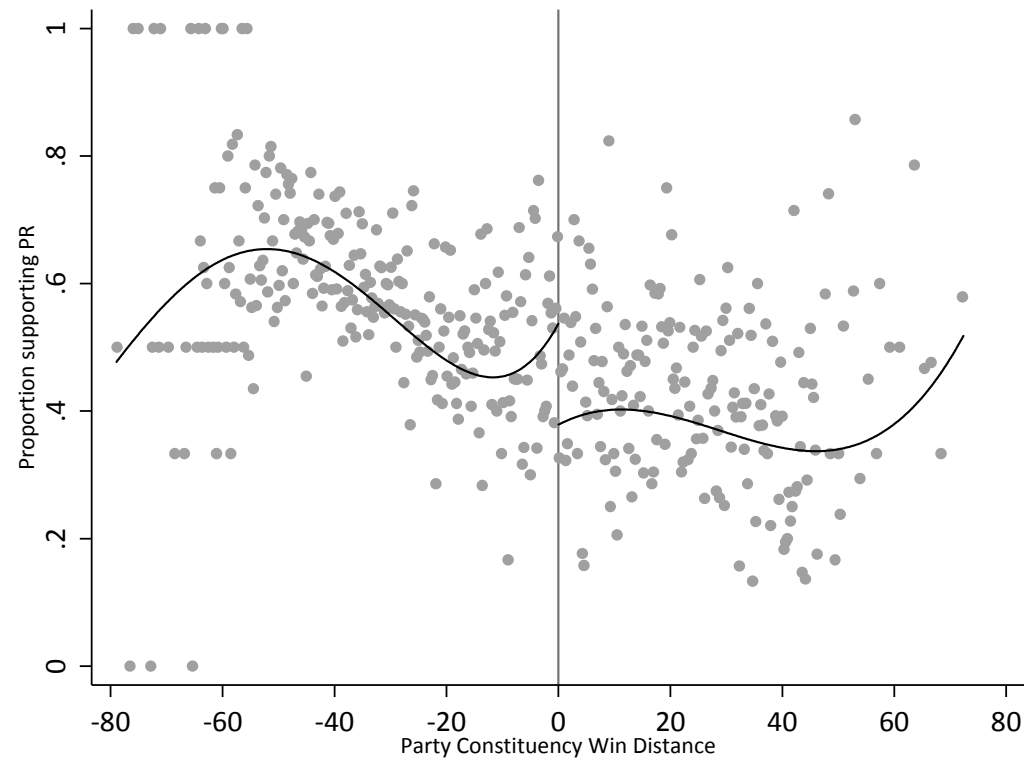
Research Examples using linked  
survey and contextual data



# Support for redistribution by household income and constituency deprivation (Wave 6, multilevel model)



# Support for Proportional Representation by party voted for's majority size (Regression Discontinuity)



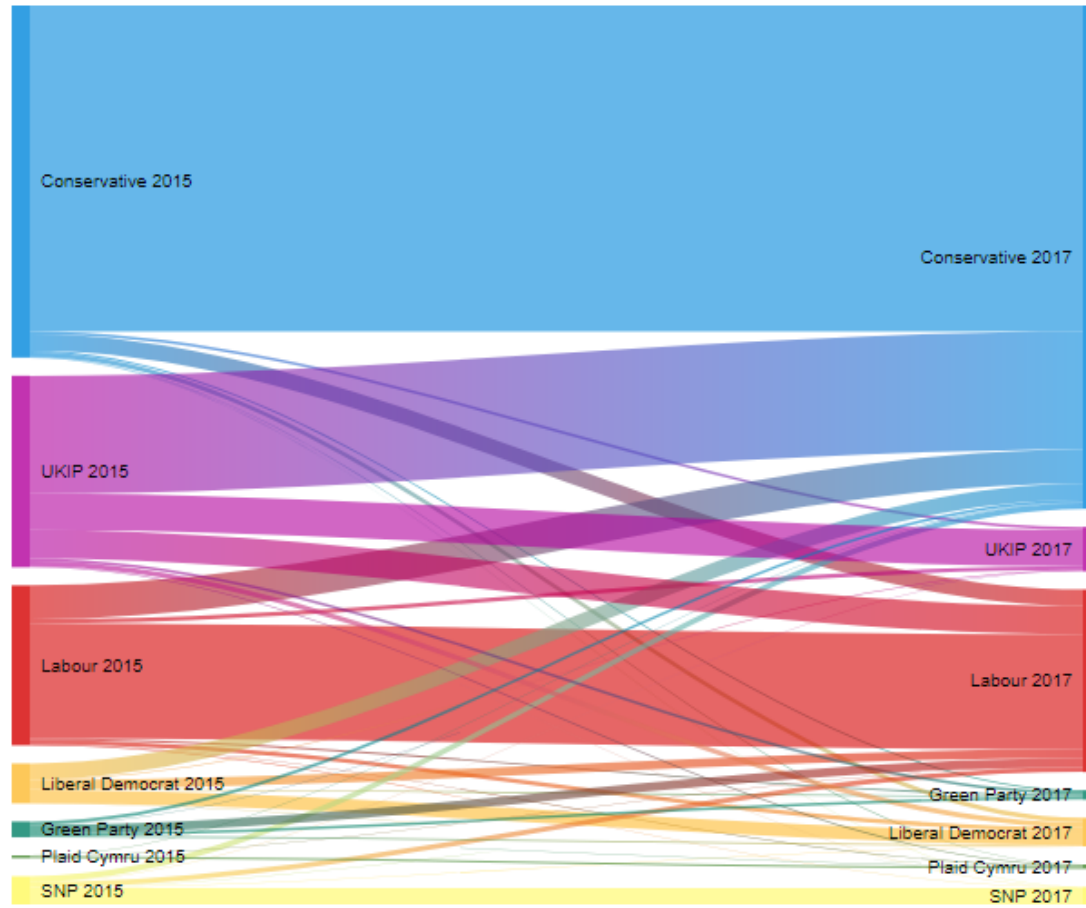
LATE = -.11, 95% CI = -.19, -.02

# 2017 General Election

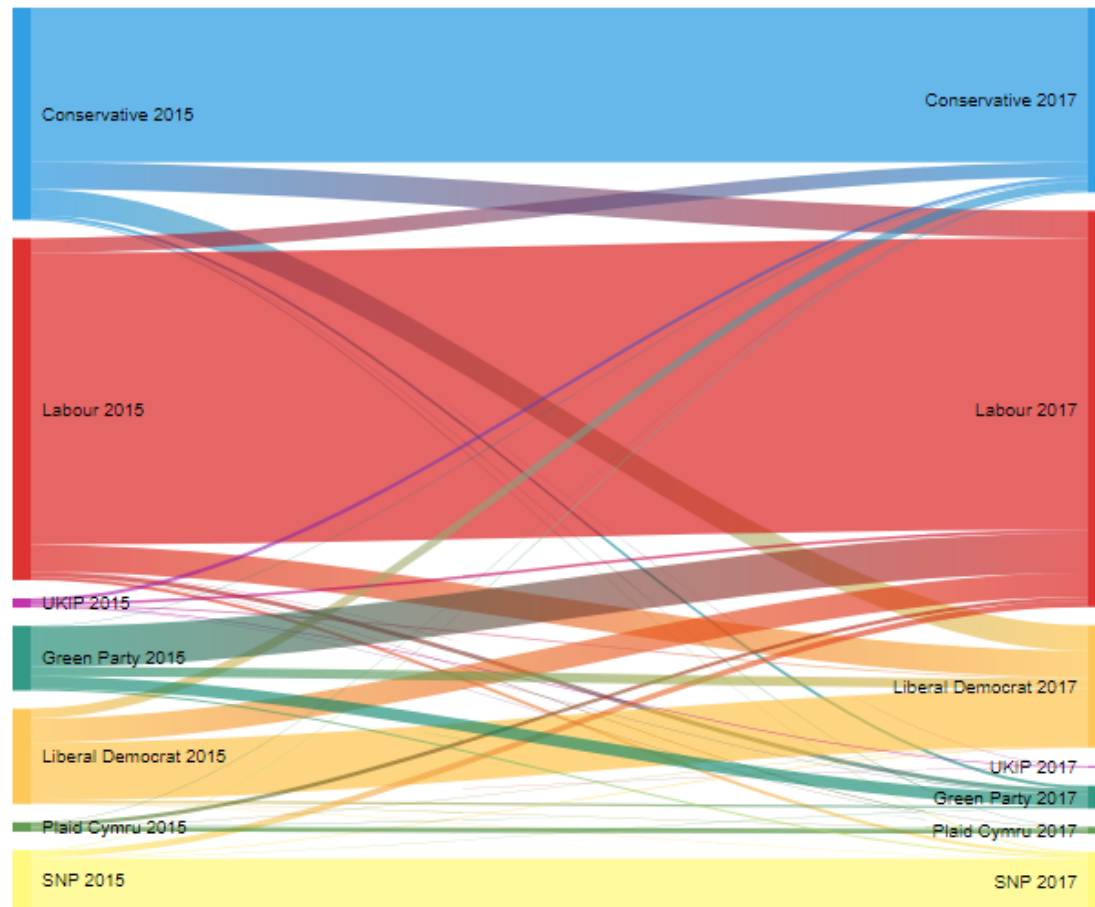
Some examples using with the BES Panel Study



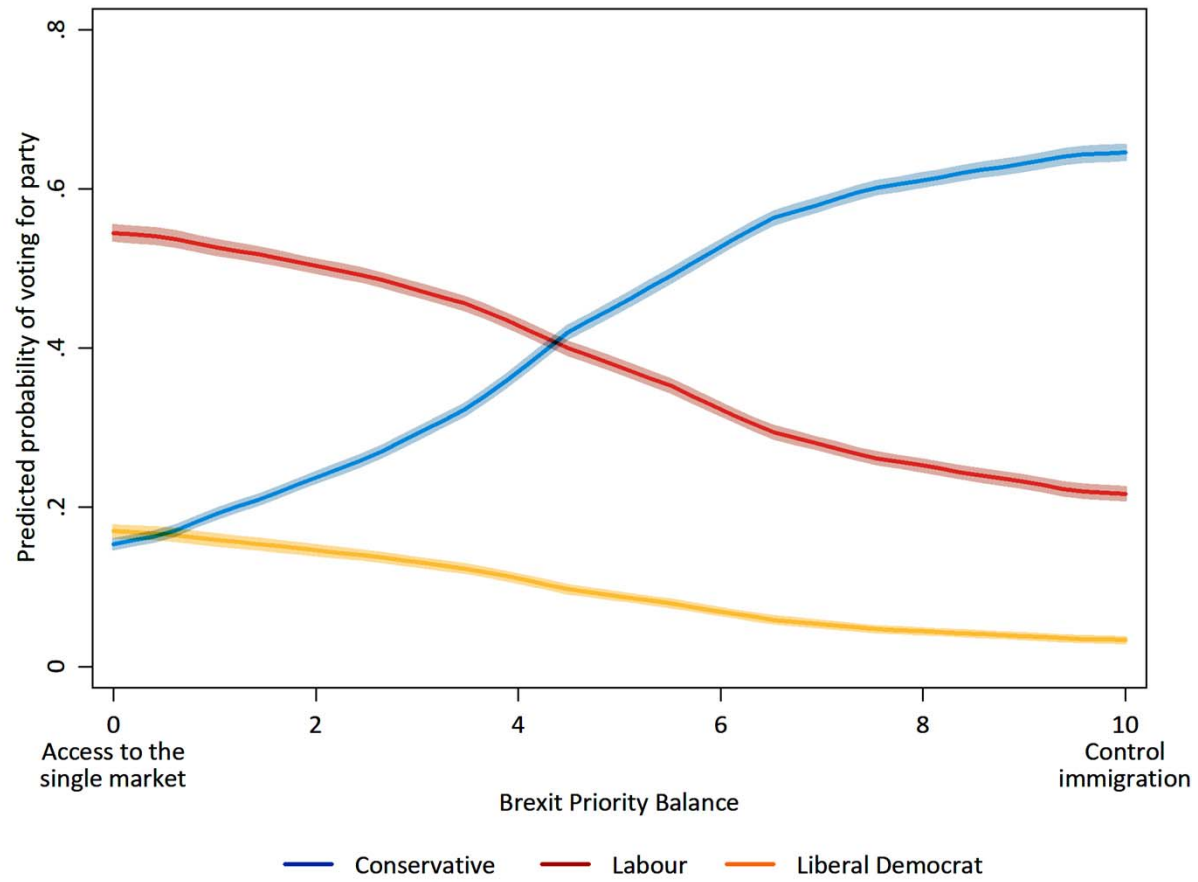
# Leavers



# Remainers



# Soft vs hard Brexit



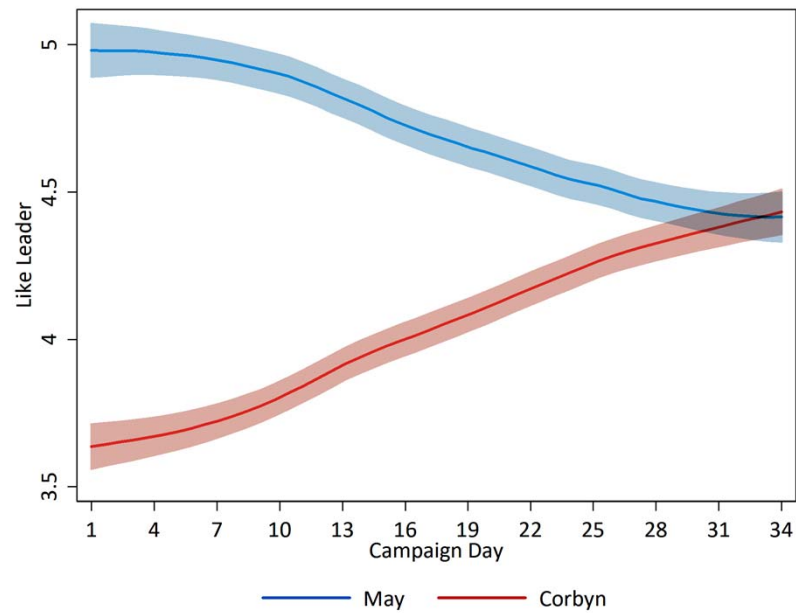
# What changed (and what didn't) over the 2017 campaign?

Example using the daily panel data during the campaign

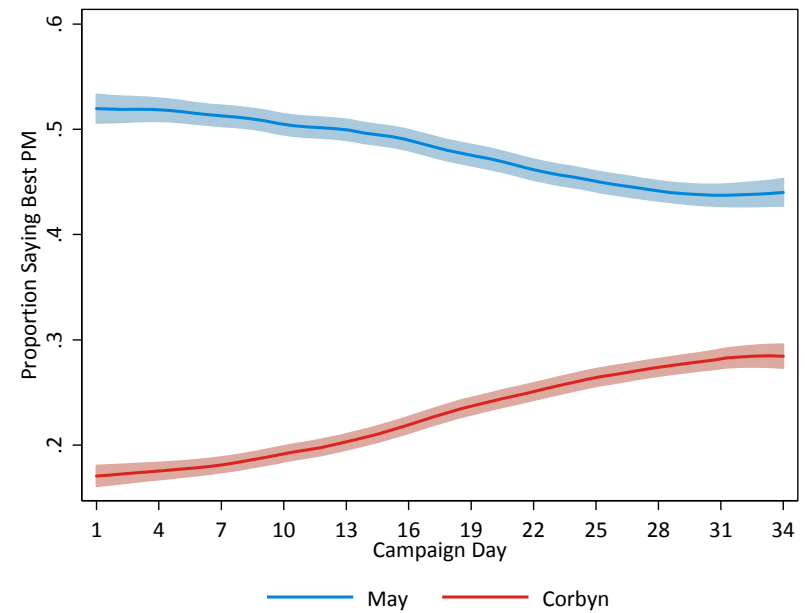


# Leader ratings over the campaign

## Like Leader

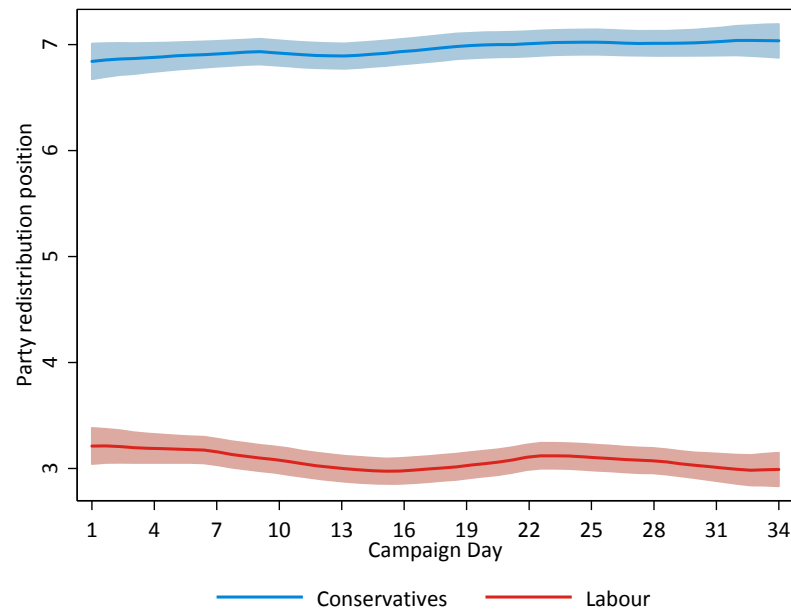


## Best PM

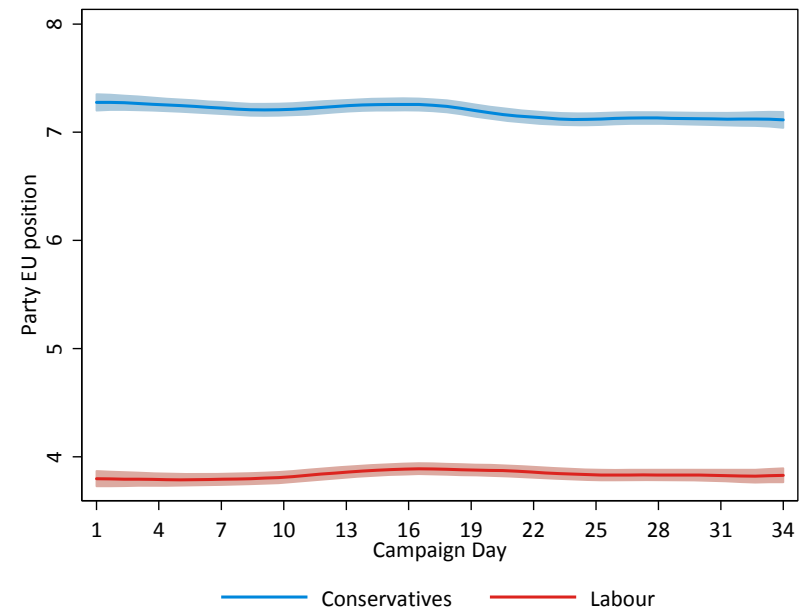


# Party positions over the campaign

## Redistribution



## EU



# Handle most important issue over the campaign

